

K.LUND Offshore as

AREA or UNIT

PROJECT

LINEAR WINCH KTC 240

PO N°

Order N° 3003476 of March 03rd, 2011

General information

DOC. TITLE

DESIGN FILE (VOL 2)

DOC. N°

10232400-001

Contractor
DOC N°

5050

REVISION

00

DATE

November 09th, 2011

CREATED BY

PBA

DOCUMENT
STATUS

FOR INFORMATION

FOR APPROVAL

Accepted

Accepted with comments
- Resubmit

Kley France information

KLEY FRANCE
REFERENCE

670 - 1-KLND-11

CUSTOMER

K.LUND Offshore as

PRODUCT

LINEAR WINCH KTC 240



KLEY France
30 Boulevard Bellerive
92566 RUEIL MALMAISON CEDEX (F)



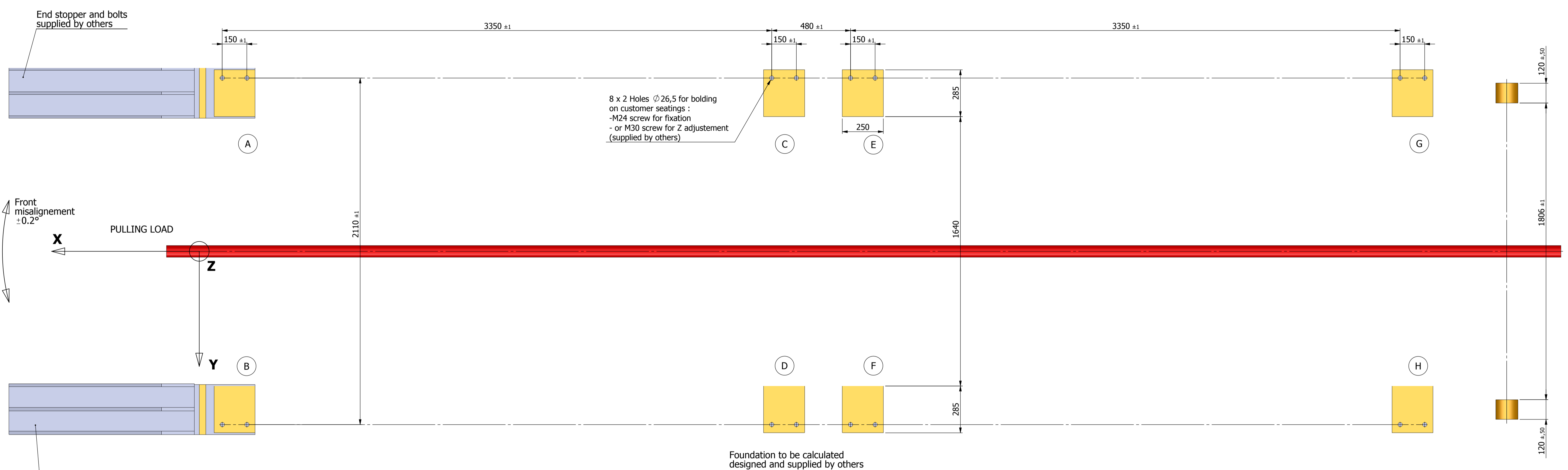
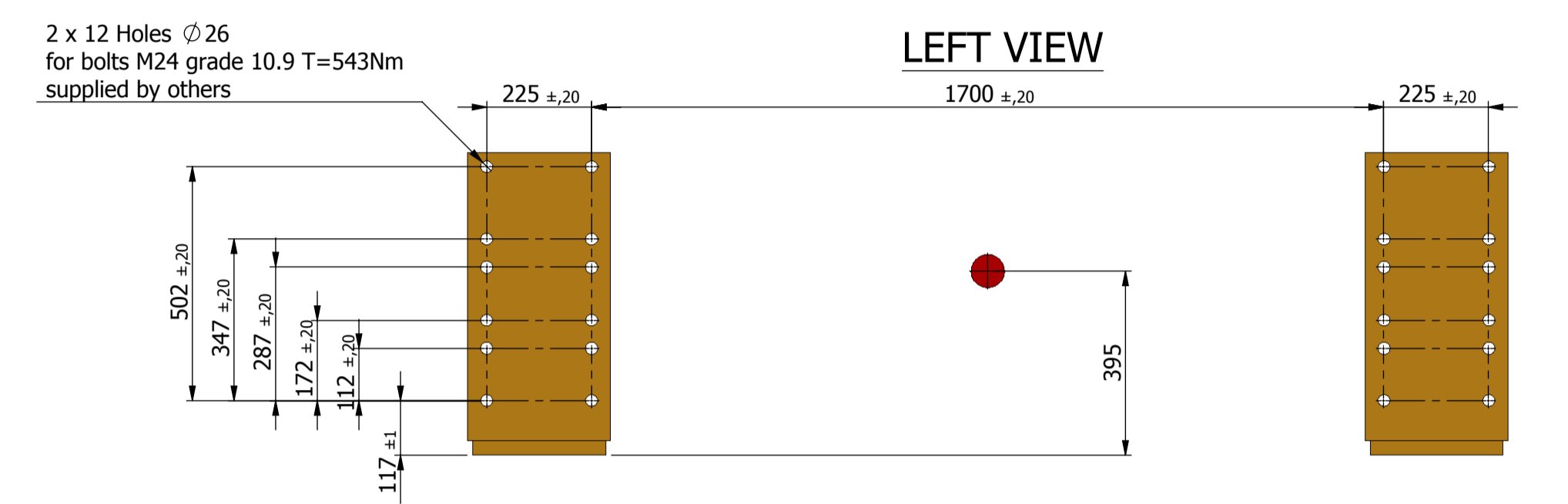
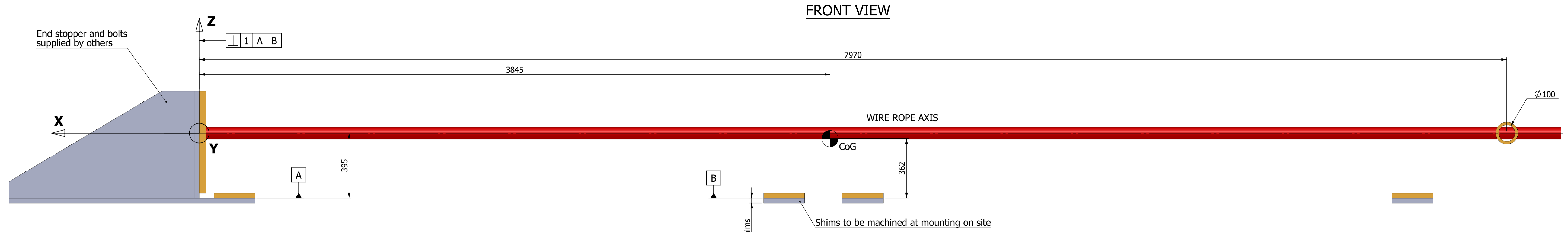
HISTORIC of MODIFICATIONS

REVISION N°	DATE	MODIFICATIONS	Initiated by
Preliminary	August 30 th , 2011	Preliminary version	P.BAETEMAN
00	November 09 th , 2011	First issue	C. HAYRAULT

List of documents and drawings

Volume 2: Design file

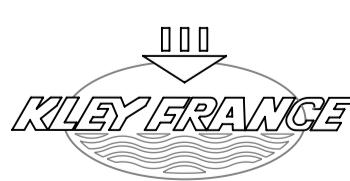
K.LUND Ref:	Doc title	Doc reference
	Mechanical documents (Drawings & Parts Lists):	
5050	KTC 240 FOOTPRINTS	670 F 1000 00
5050	KTC 240 LIFTING OFFSHORE (SHEET 1/2 & 2/2)	670 L 1000 00
5050	KTC 240 LIFTING ONSHORE	670 L 1000 00
5050	KTC 240 LINEAR WINCH G/A	670 M 1000 00
5050	KTC 240 TRACTION BLOCK S/A	670 M 1100 01
5050	KTC 240 MAIN CYLINDER S/A	670 M 1200 01
5050	KTC 240 WEDGE CYLINDER S/A	670 M 1300 01
5050	KTC 240 FRAME S/A	670 M 1400 01
5050	KTC 240 BACK ROLLERS S/A	670 M 1500 01
5050	KTC 240 LENGTH SENSOR S/A	670 M 1600 01
5050	KTC 240 PIPING G/A	670 M 1700 01
	Hydraulical documents (Drawings & Parts Lists):	
5050	Hydraulical interconnection diagram	670 H 0000 01
5050	WINCH diagram	670 H 1000 01
	Electrical documents (Drawings & Parts Lists):	
5050	Electrical interconnection diagram	670 E 0000 04
5050	Electrical diagram, cabinet, list of parts & arrangement	670 E 1000 02



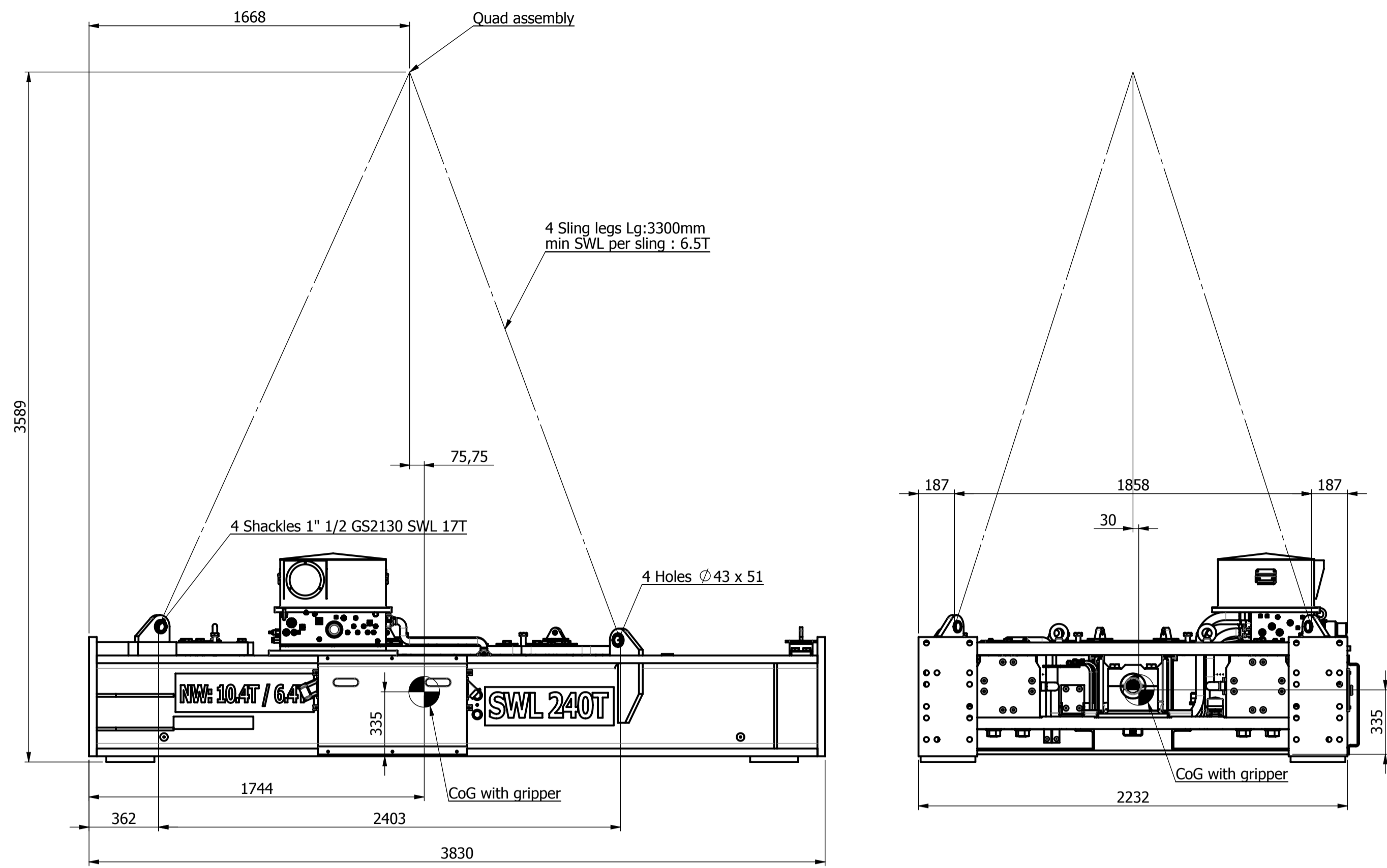
Winch weight : 22.5 T
 Accelerations : $\gamma_x = \pm 0.3g$
 $\gamma_y = \pm 0.5g$
 $\gamma_z = g \pm 0.3g$
 Pulling load considered to be parallel to X axis
 Pulling load for deckloads calculation : 240 T X 143% = 343 T

Area	DECK LOADS	
	LOADS PER UNIT AREA	
Efforts applied at height = 395mm above winch basis		
A and B	X	+1750 kN
	Y	-35 kN
	Z	+25 kN
C and D	X	0 kN
	Y	+25 kN
	Z	+100 kN
E and F	X	0 kN
	Y	+25 kN
	Z	+100 kN
G and H	X	0 kN
	Y	+25 kN
	Z	+100 kN

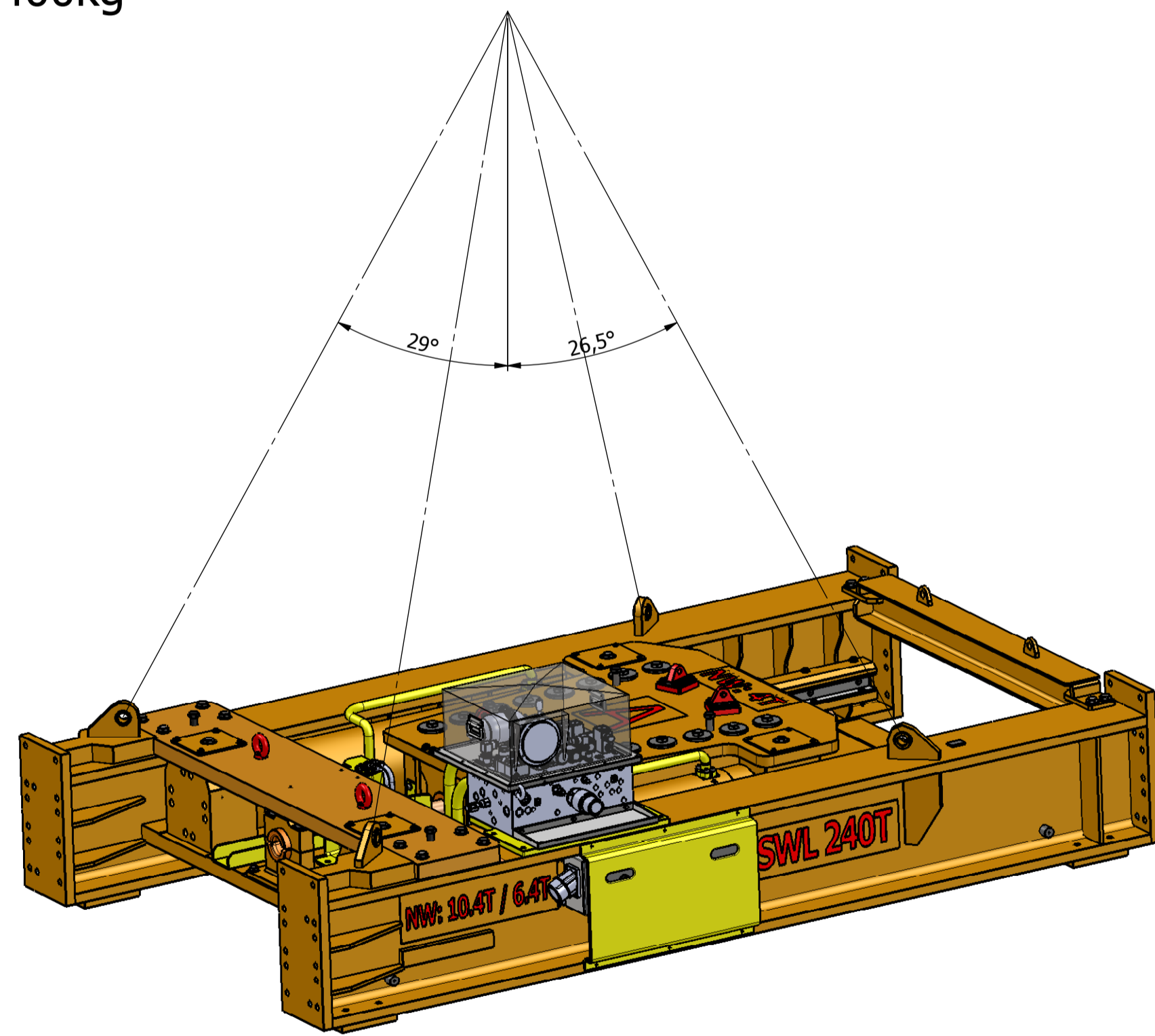
*NOTICE: Information herein presented is confidential, proprietary information of KILEY-FRANCE. Any person accepting this information is authorized to use it only for the purpose intended and to return the same on request.

0	10/11/2011	AS BUILT	PG	JLS	AF	
01	04/05/2011	First issue	PG			
REV.	DATE	MODIFICATION	AUTHOR	CHECKED	APPROVED	
Historique des Révisions						
			PROJECT 1-KLND-11 LINEAR WINCH KTC-240			
30 Boulevard Bellerive 92566 RUEIL-MALMAISON (F) TEL: +33 (0) 1.41.39.86.70 FAX: +33 (0) 1.41.39.86.86 www.kileyfrance.fr			TITLE LINEAR WINCH KTC-240 FOOT PRINT			
SCALE	1:12.5	SITE	A1	NUMBER	670 F 1000	
CUSTOMER REF:					SHEET	01

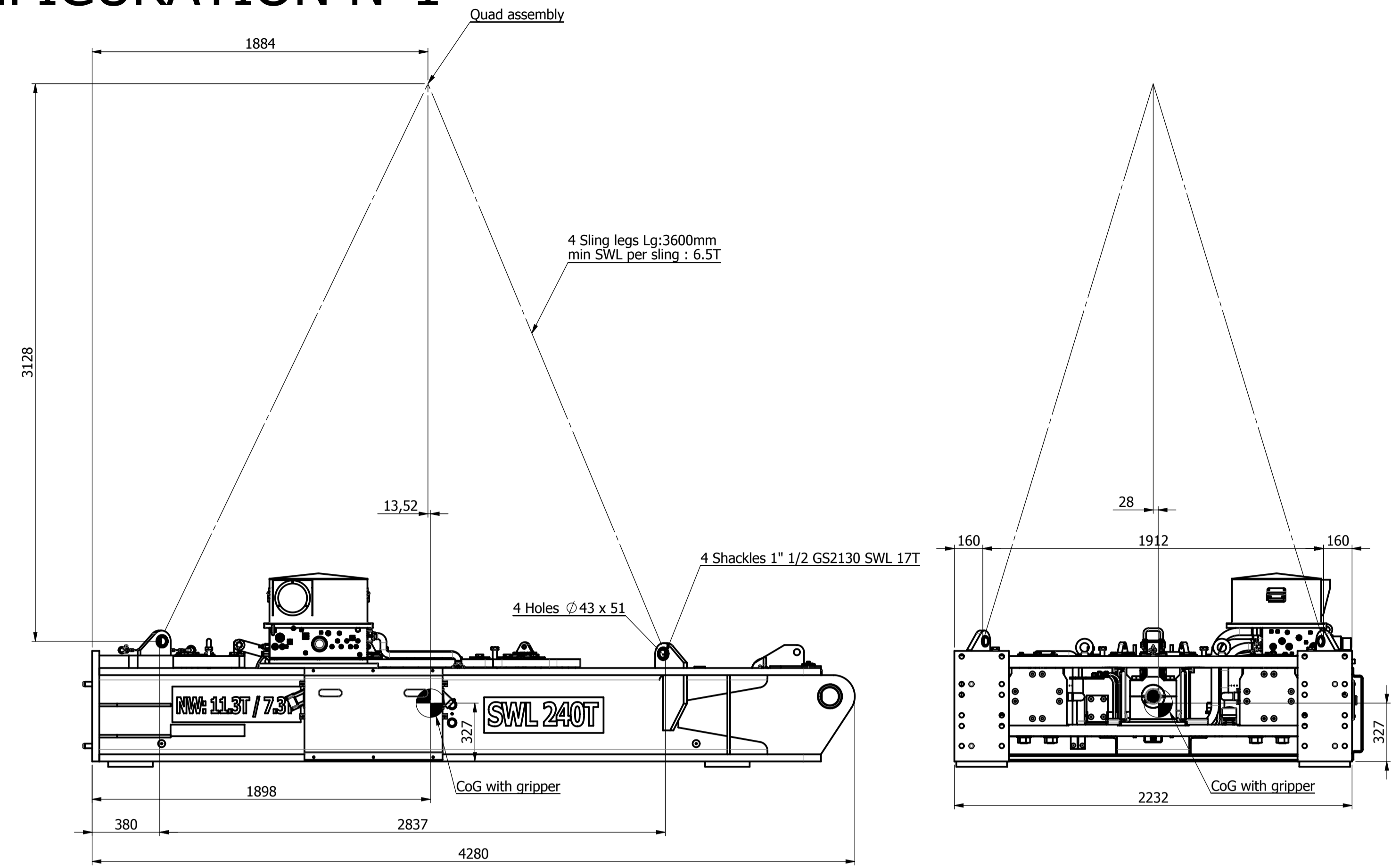
OFFSHORE LIFTING CONFIGURATION N°1



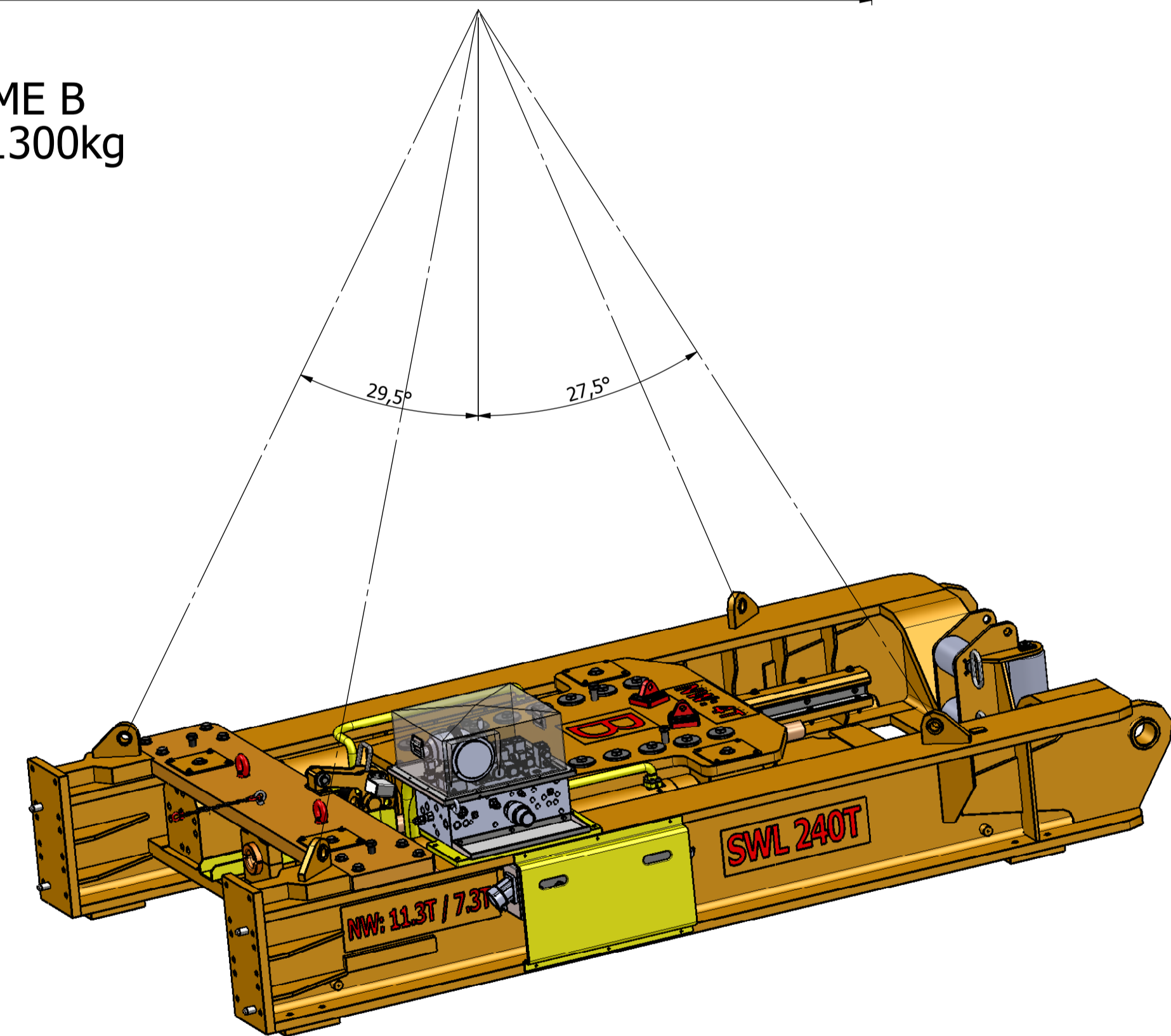
FRONT FRAME A
WEIGHT : 10400kg



LIFTING LUGS DNV 2.7.3 CERTIFIED FOR OFFSHORE LIFTING

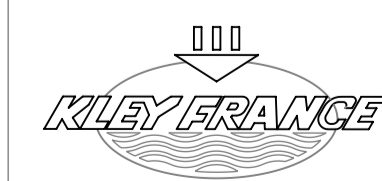


BACK FRAME B
WEIGHT : 11300kg

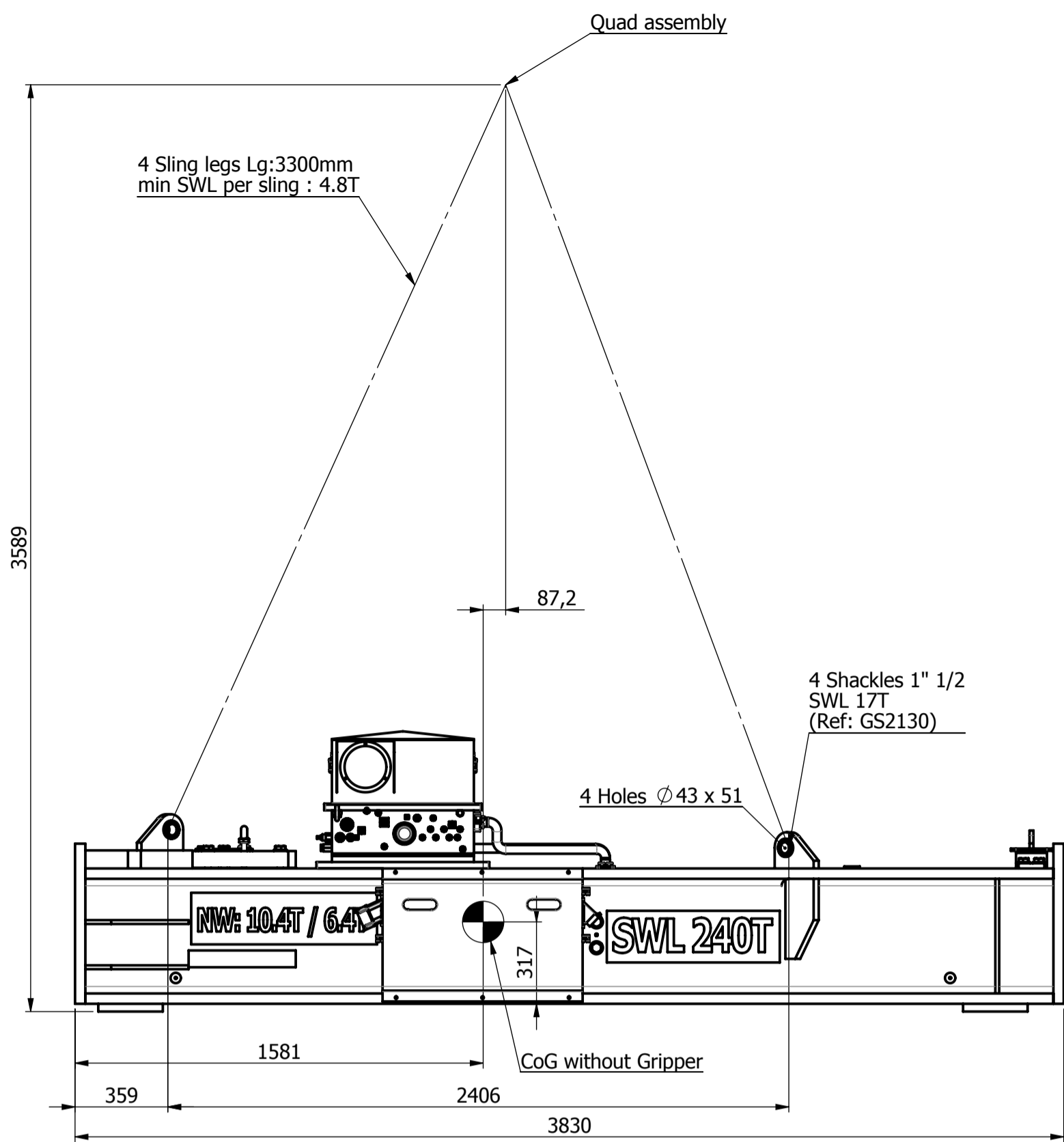


LIFTING LUGS DNV 2.7.3 CERTIFIED FOR OFFSHORE LIFTING

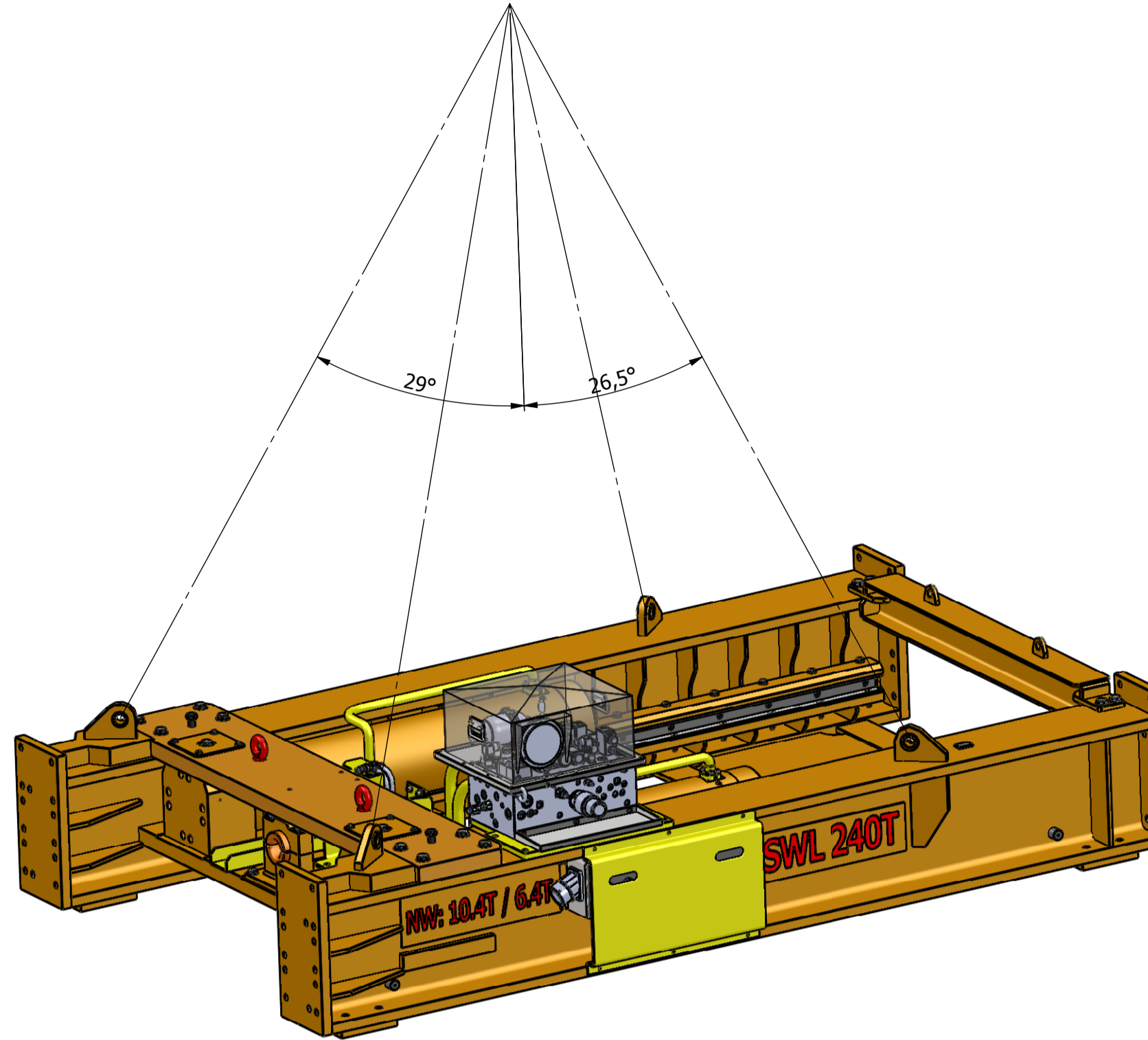
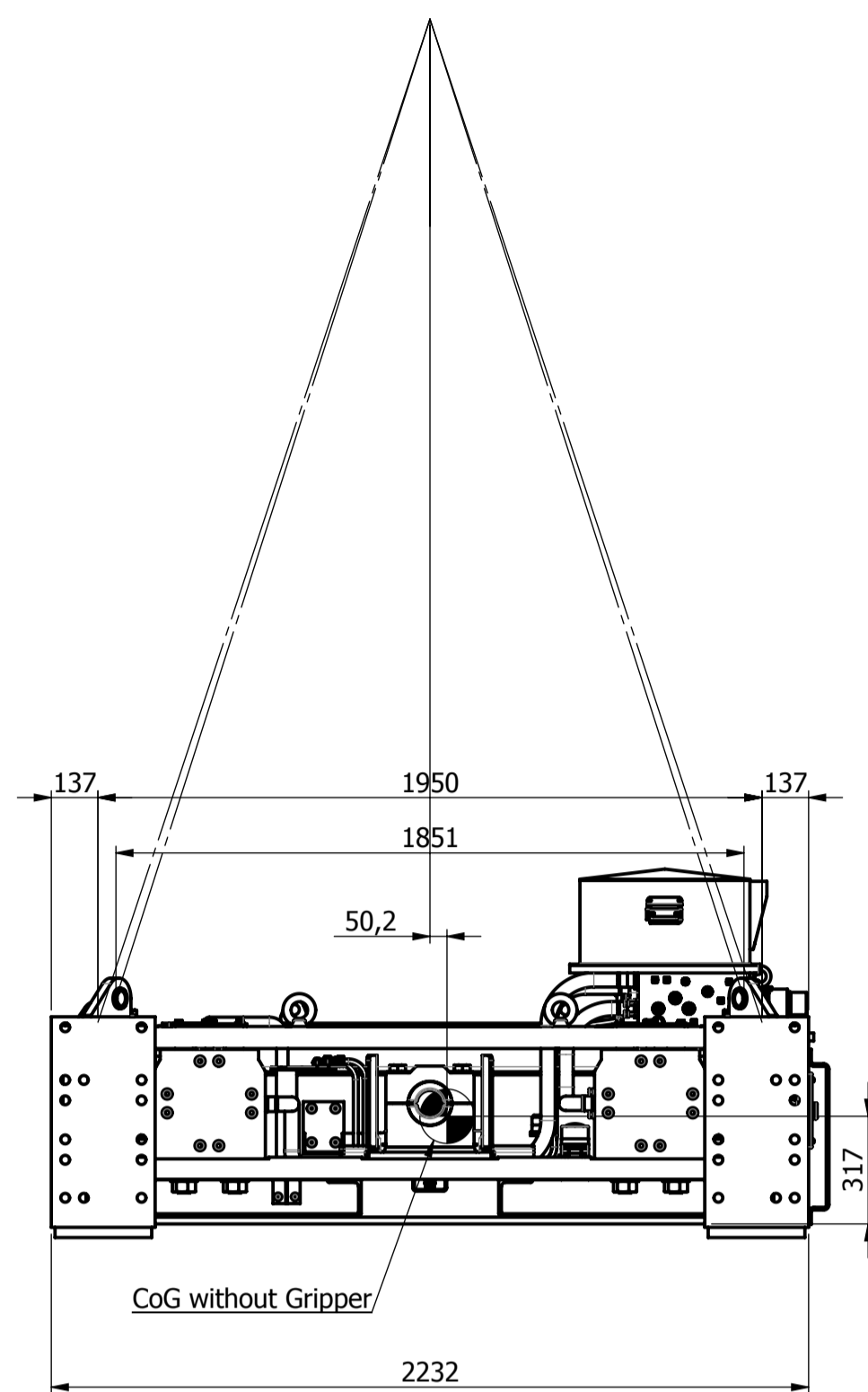
** NOTICE: Information herein presented is confidential, proprietary information of KLEY-FRANCE. Any person accepting this information is authorized to use it only for the specific project and to return the same on request.

0	07/11/2011	AS BUILT	PG	JLS	SBL
b	13/09/2011	Update	PG		
a	05/04/2011	First issue	PG		
REV.	DATE	MODIFICATION	AUTHOR	CHECKED	APPROVED
Historique des Révisions					
			PROJECT 1-KLND-11 LINEAR WINCH KTC-240 TITLE LINEAR WINCH KTC-240 Lifting		
30 Boulevard Bellerive 92566 RUEIL-MALMAISON (F) TEL: +33 (0) 1.41.39.86.70 FAX: +33 (0) 1.41.39.86.86 www.kleyfrance.fr			SCALE	SHEET	NUMBER
			1:20	A1	670 L 1000
CUSTOMER REF:					
					SHEET 1 OF 2

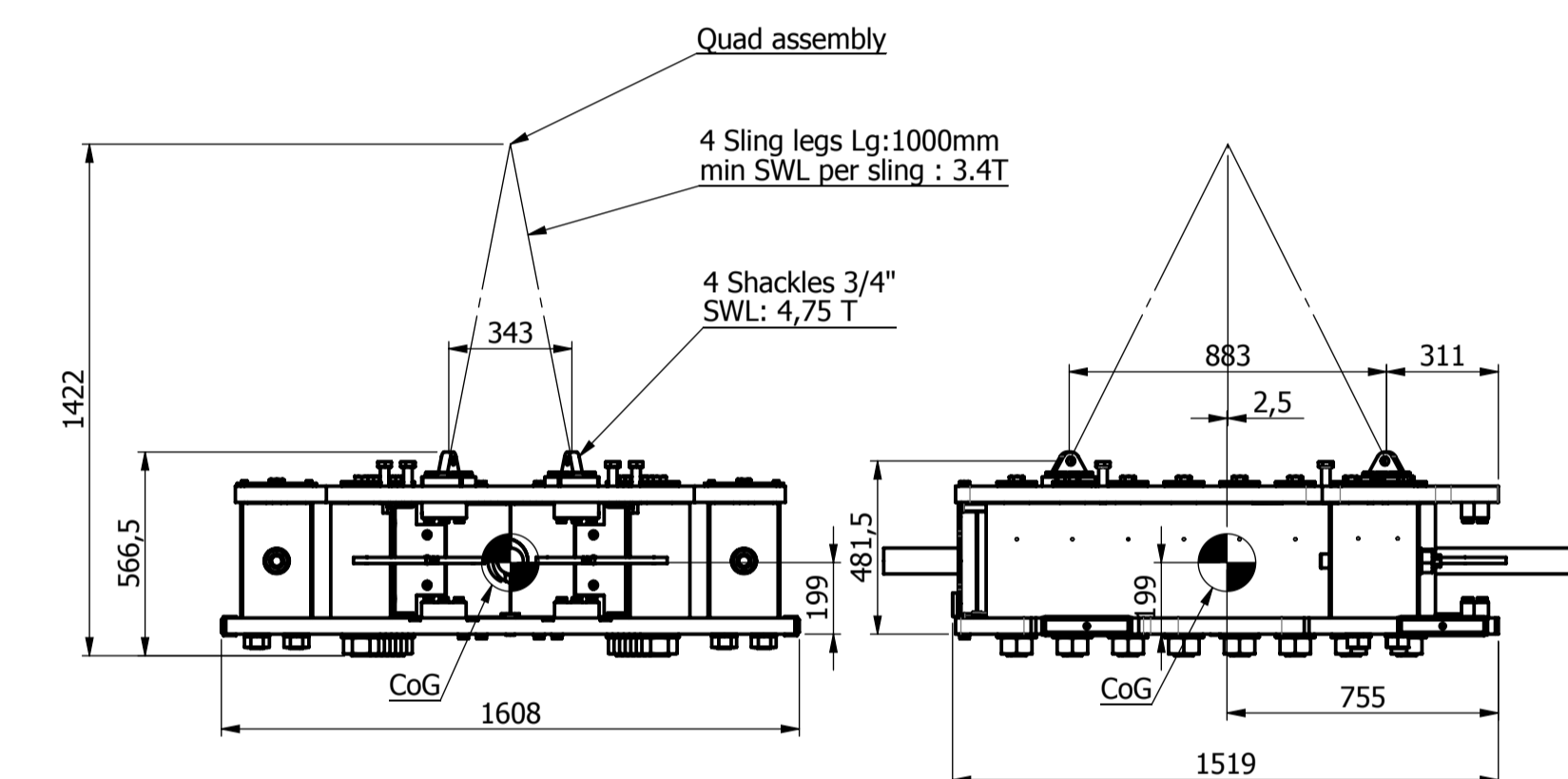
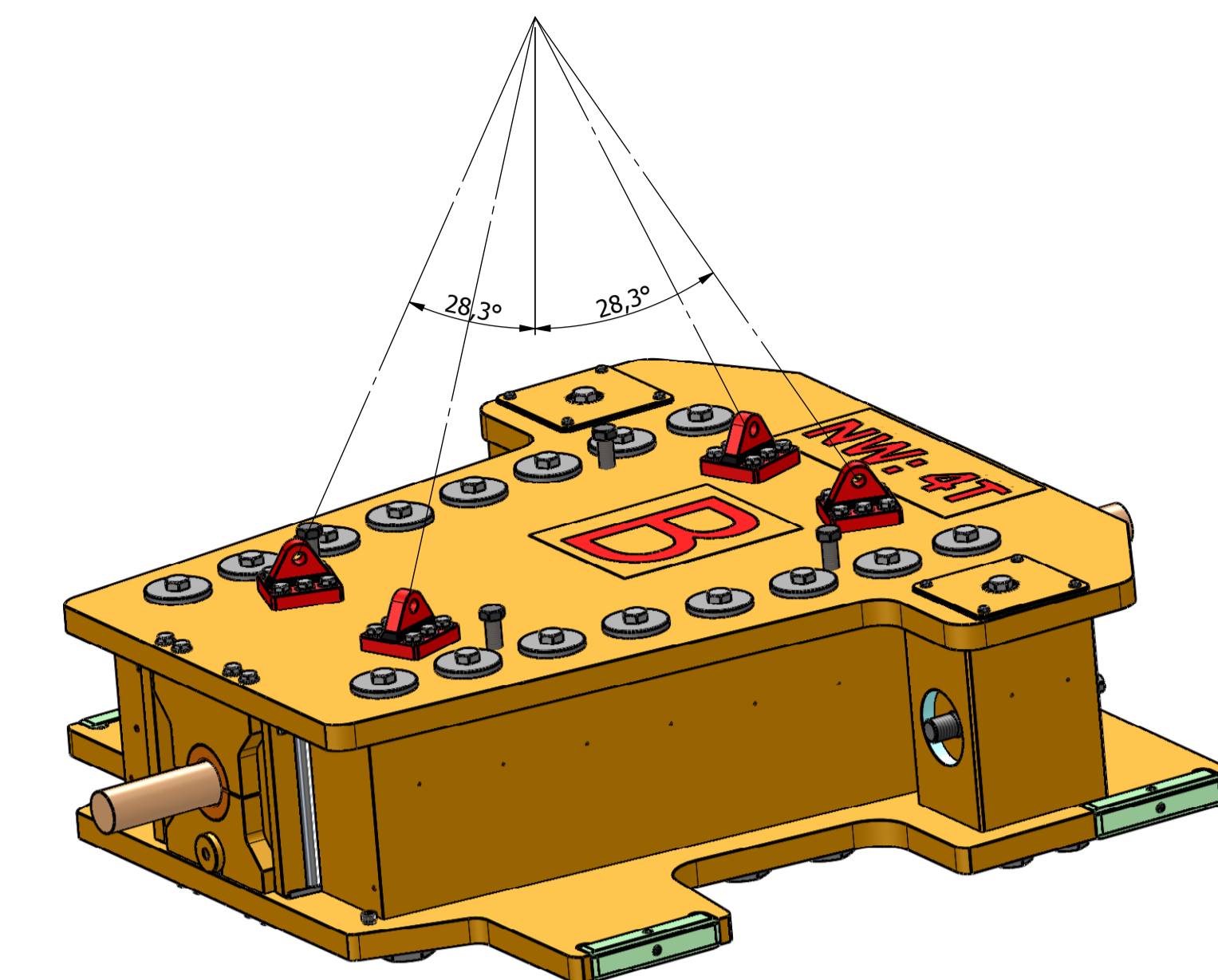
OFFSHORE LIFTING CONFIGURATION N° 2



FRONT FRAME A
WEIGHT : 6400kg

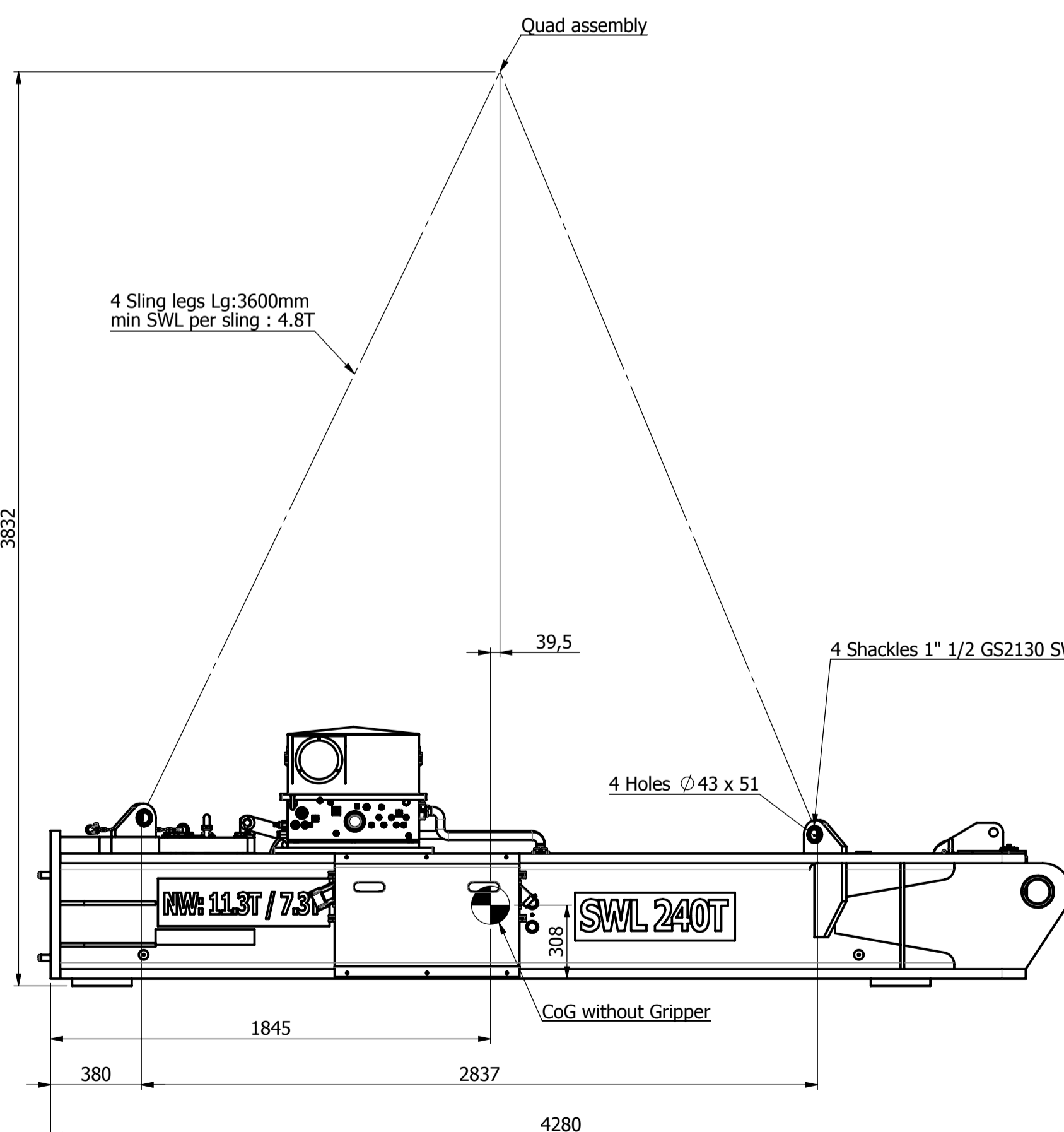


LIFTING LUGS DNV 2.7.3 CERTIFIED FOR OFFSHORE LIFTING

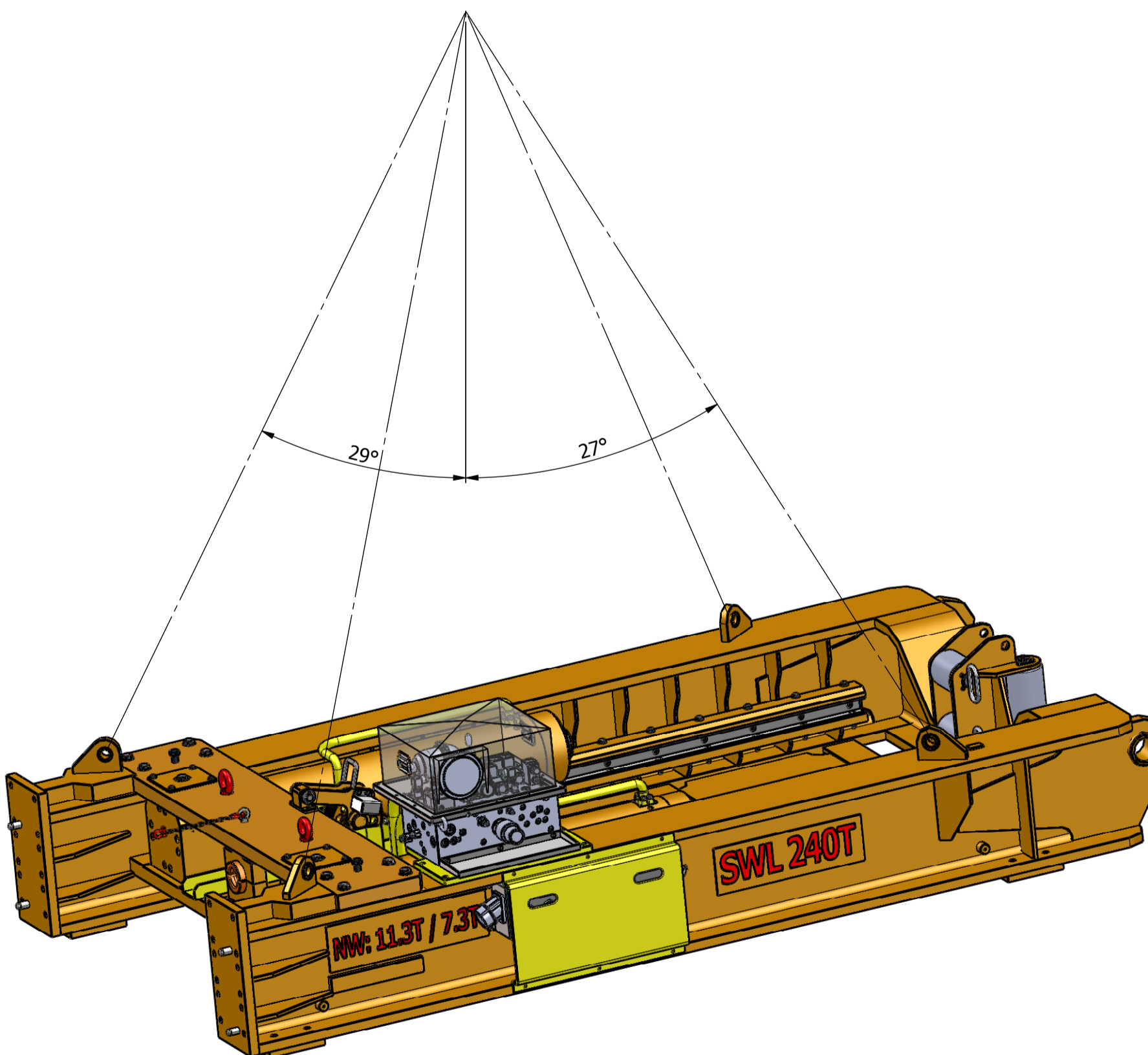
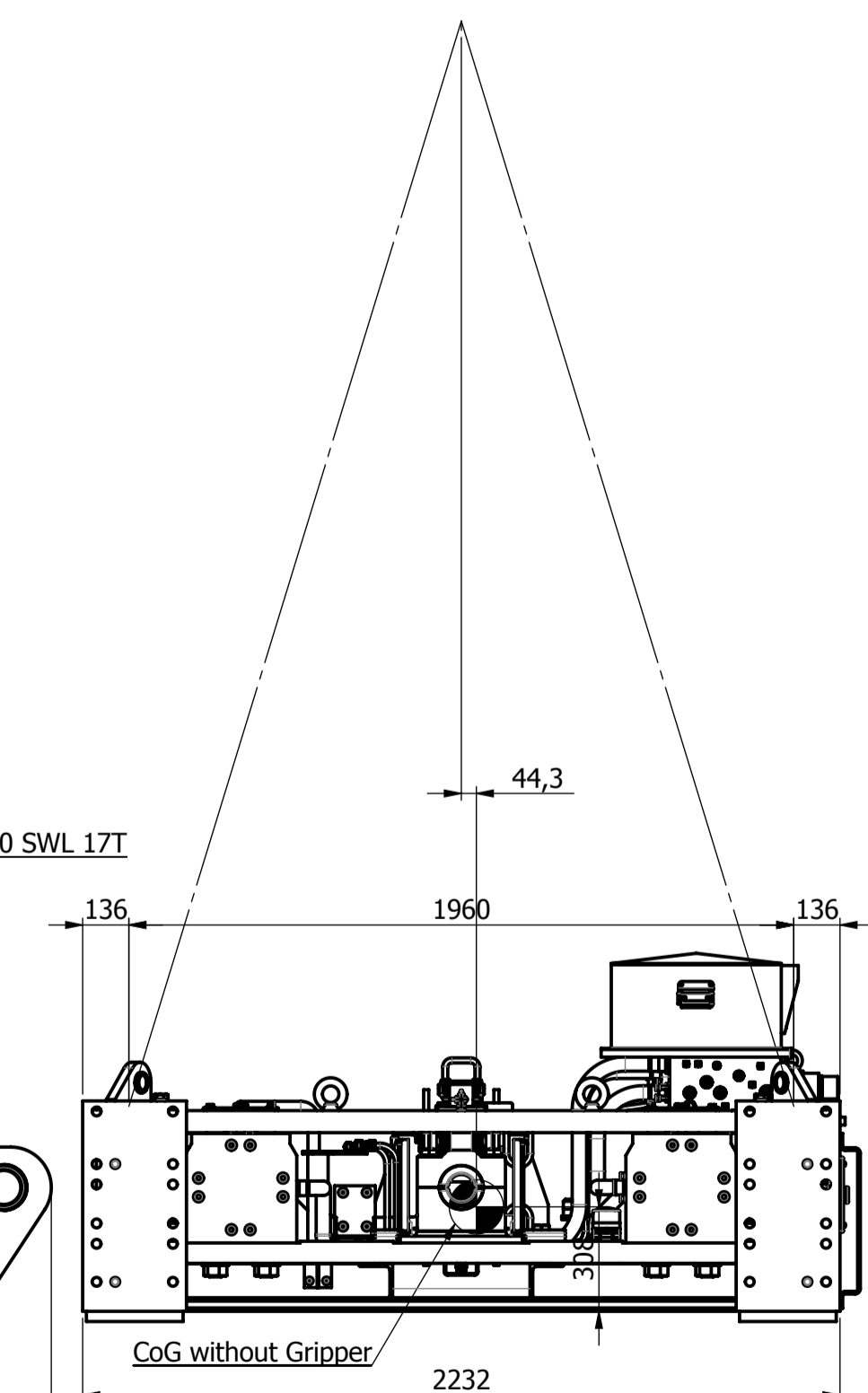


GRIPPER A and B
WEIGHT : 4000kg unit

LIFTING LUGS DNV 2.7.3 CERTIFIED FOR OFFSHORE LIFTING



BACK FRAME B
WEIGHT : 7300kg



LIFTING LUGS DNV 2.7.3 CERTIFIED FOR OFFSHORE LIFTING

NOTICE: Information herein presented is confidential, proprietary information of KILEY-FRANCE. Any person accepting this information is authorized to use it only for the specific project and to return the same on request.

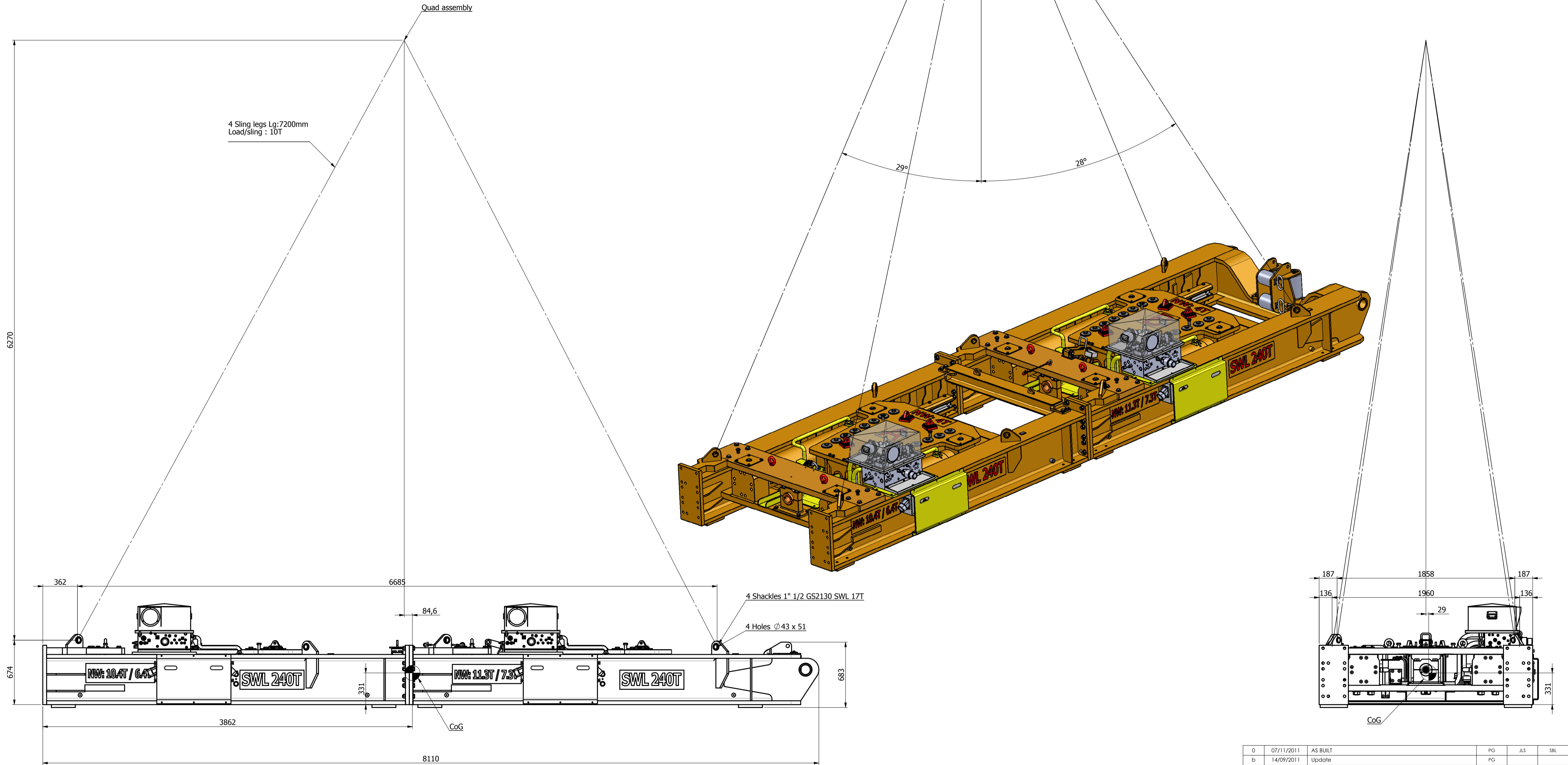
0	10/10/2011	AS BUILT	PG	JLS	SBL
c	13/09/2011	Update	PG		
b	07/09/2011	Add ref for grippers padeyes	DC		
a	05/04/2011	First issue	PG		
REV.	DATE	MODIFICATION	AUTHOR	CHECKED	APPROVED



30 Boulevard Bellerive
92566 RUEIL-MALMAISON (F)
TEL: +33 (0) 1.41.39.86.70
FAX: +33 (0) 1.41.39.86.86
www.kileyfrance.fr

PROJECT	1-KLND-11		
TITLE	LINEAR WINCH KTC-240		
SCALE	1:20	SHEET	A1
NUMBER	670 L 1000		
CUSTOMER REF:			

ONSHORE LIFTING CONFIGURATION



LINEAR WINCH KTC-240
WEIGHT : 21700kg

LIFTING LUGS CERTIFIED FOR ONSHORE LIFTING
(DNV standard 2-22 Lifting Appliance)

**NOTICE: Information herein presented is confidential, proprietary information of KLEY-FRANCE. Any person accepting this information is authorized to use it only for the project for which it is intended. Any use or duplication thereof except as authorized by K/F and to return the same on request.

0	07/11/2011	AS BUILT	PG	JLS	SBL
b	14/09/2011	Update	PG		
a	05/04/2011	First issue	PG		
REV.	DATE	MODIFICATION	AUTHOR	CHECKED	APPROVED

Historique des Révisions

PROJECT: **1-KLND-11**

TITLE: **LINEAR WINCH KTC-240**


Sub-TITLE: **LINEAR WINCH KTC-240**

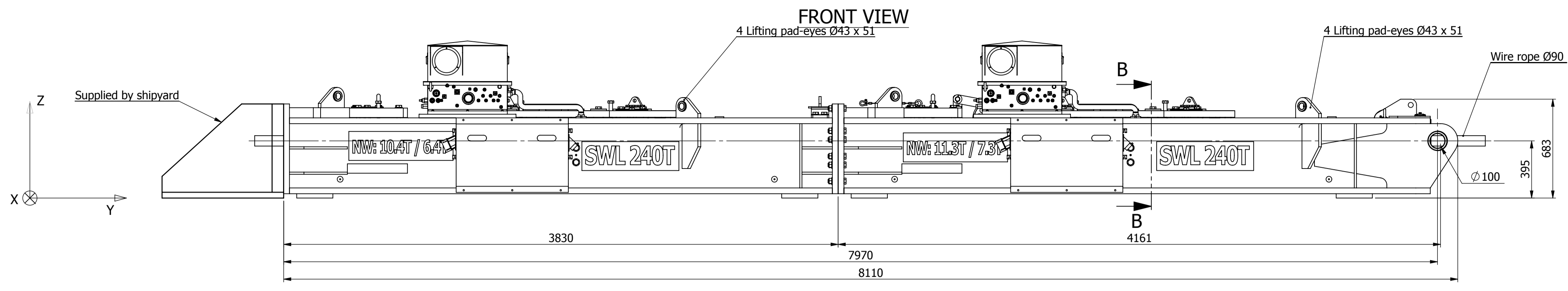
Category: **Lifting**

SCALE: 1:20 SHEET: A1 NUMBER: 670 L 1000

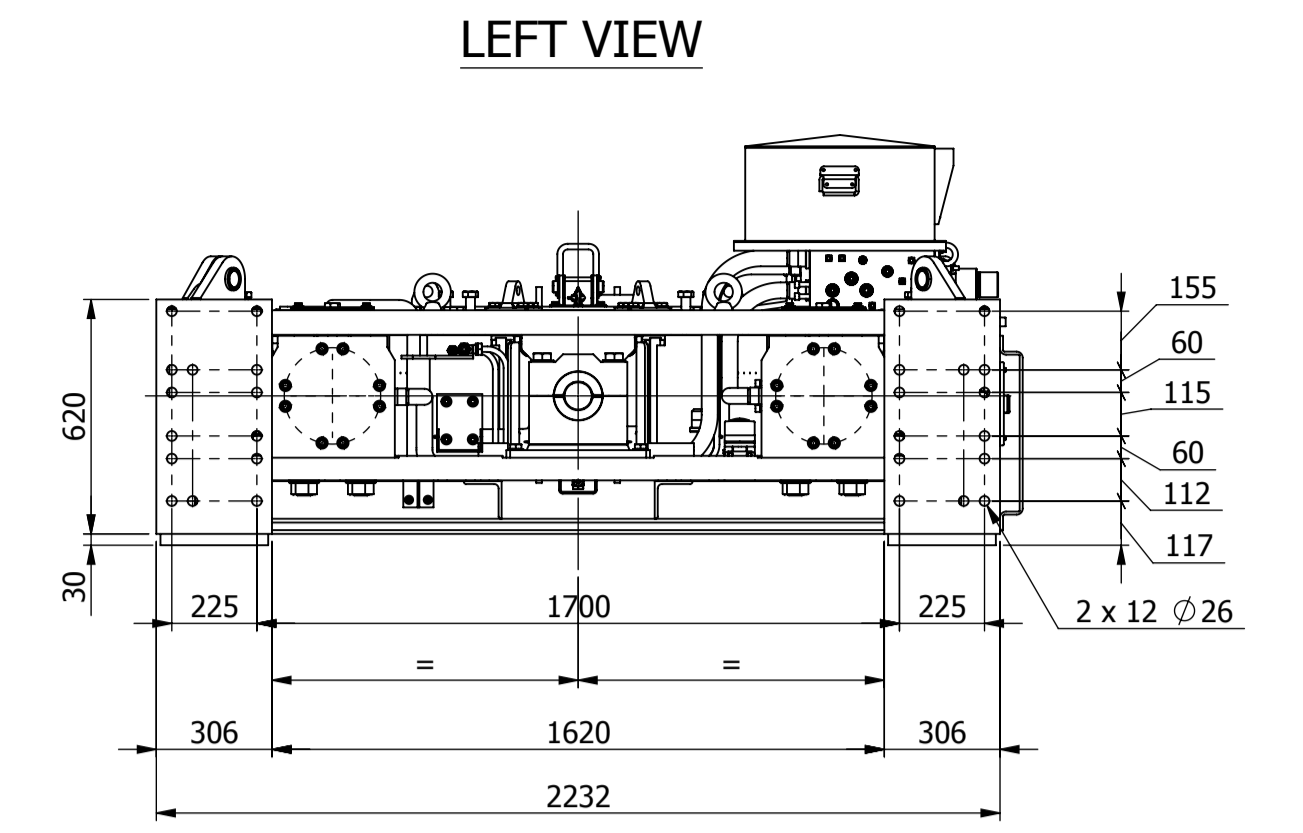
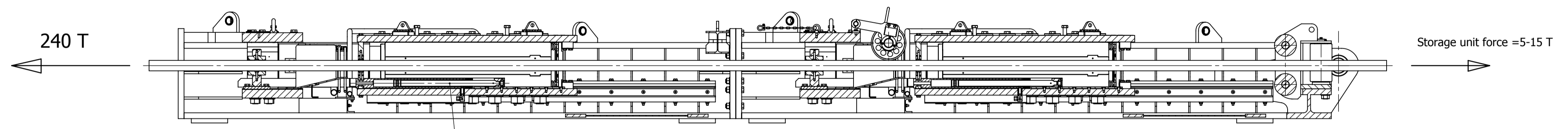
CUSTOMER REF: _____

SHEET 1 OF 1

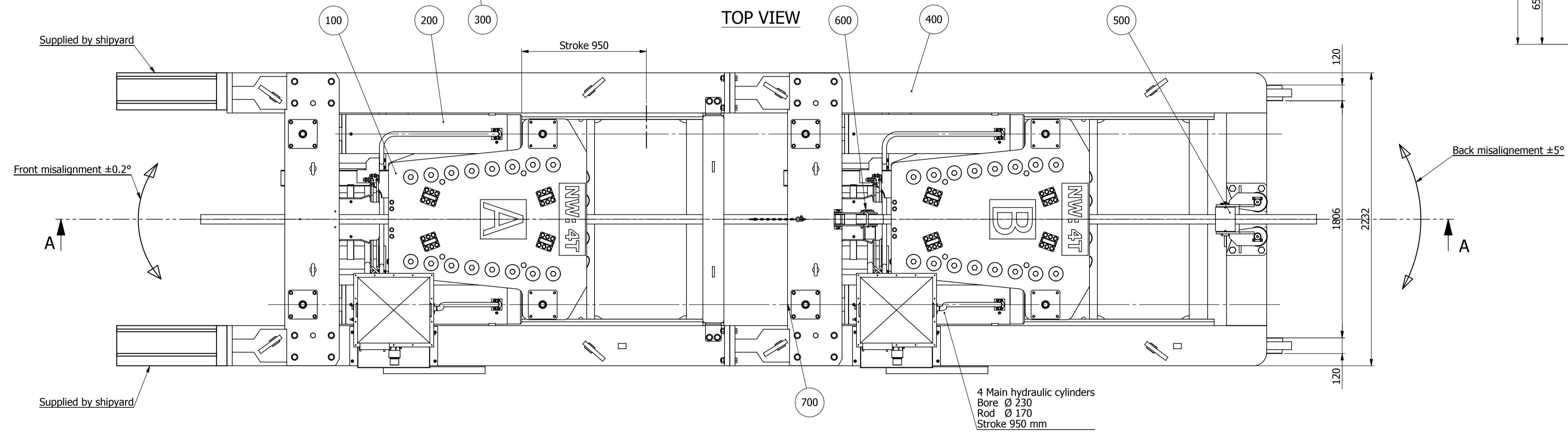
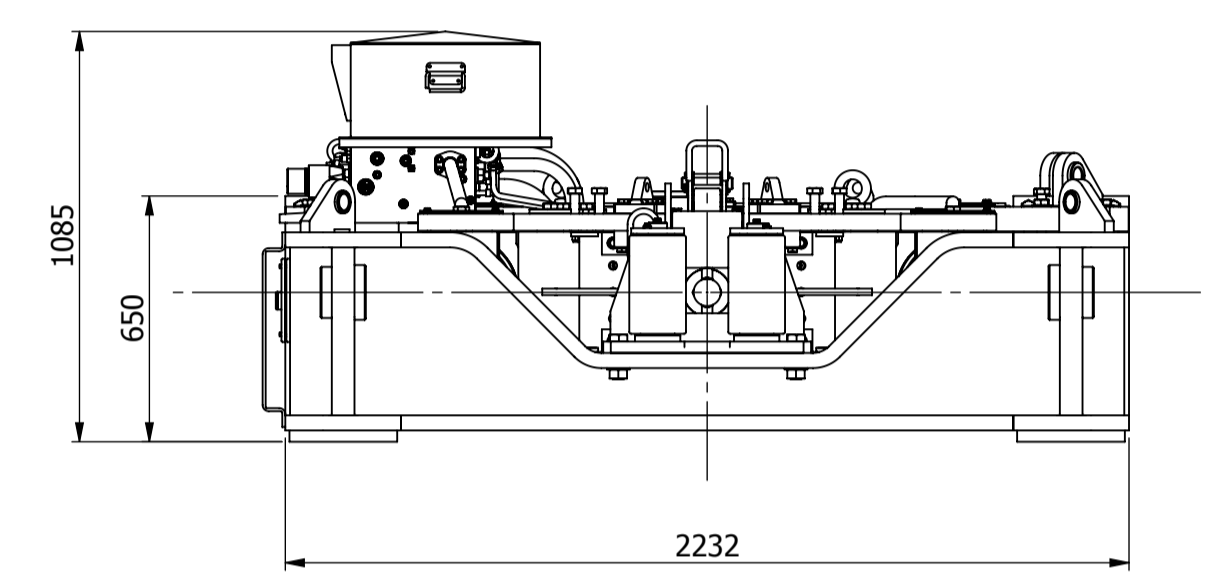

 30 Boulevard Bellèrive
 92566 RUEIL-MALMAISON (F)
 TEL: +33 (0) 1.41.39.86.70
 FAX: +33 (0) 1.41.39.86.86
 www.kleyfrance.fr



SECTION A-A

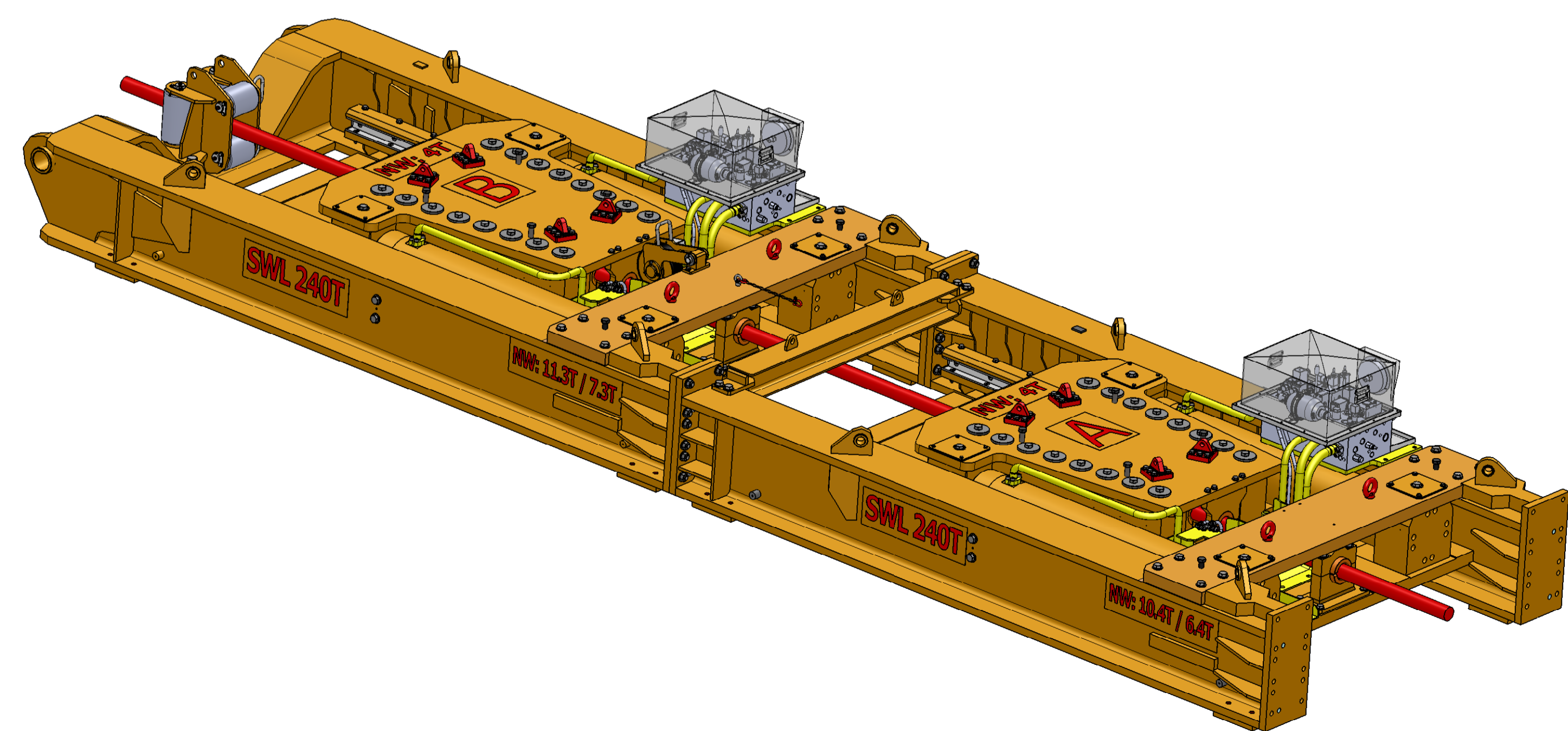
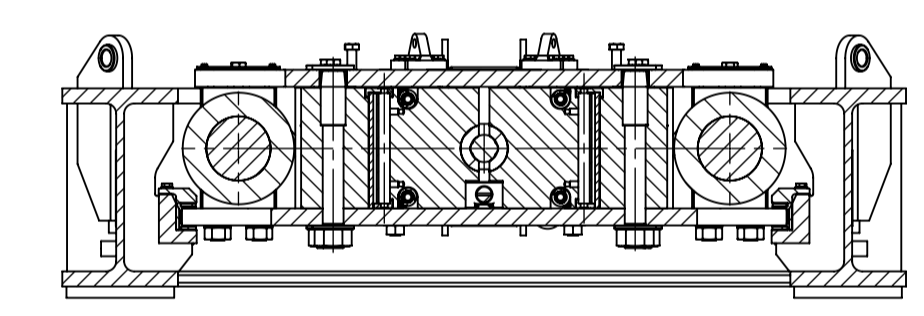


RIGHT VIEW



TOP VIEW

SECTION B-B



Qty: 1
Weight: 21700 Kg

Rep	Qty	Sub-assembly	Weight
700	1	PIPING	300 kg x 2
600	1	LENGTH SENSOR	40 kg
500	1	BACK ROLLERS	200 kg
400	1	FRAME	10000 kg
300	2	WEDGE CYLINDER	17 kg x 2
200	4	MAIN CYLINDER	715 kg x 4
100	2	GRIPPERS	3983 kg x 2

NOTICE: Information herein presented is confidential, proprietary information of KILEY-FRANCE. Any person accepting this information is authorized to use it only for the purpose intended and to return the same on request.

0	07/11/2011	AS BUILT	PG	JLS	SBL
c	07/09/2011	Winch weight update	DC	SB	
b	01/04/2011	Up to date	PG		
a	10/11/2010	First issue AP	MG	JLM	

REV.	DATE	MODIFICATION	AUTHOR	CHECKED	APPROVED
Historique des Révisions					

PROJECT: **1-KLND-11**
TITLE: **LINEAR WINCH KTC-240**

30 Boulevard Bellerive
92566 RUEIL-MALMAISON (F)
TEL: +33 (0) 1.41.39.86.70
FAX: +33 (0) 1.41.39.86.86
www.kileyfrance.fr

SCALE: 1:20 SITE: A1 NUMBER: 670 M 1000

CUSTOMER REF: SHEET 1 of 1