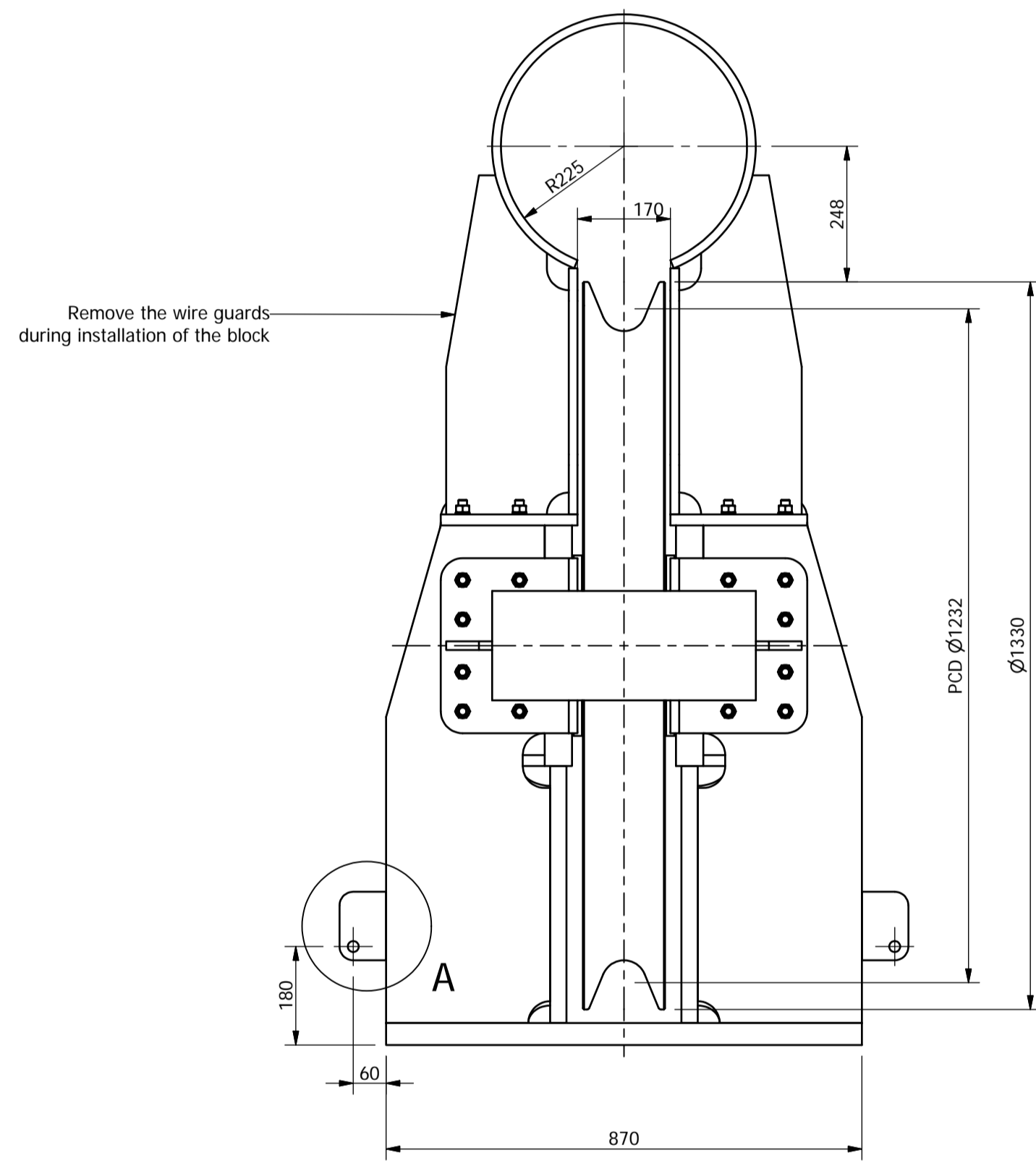
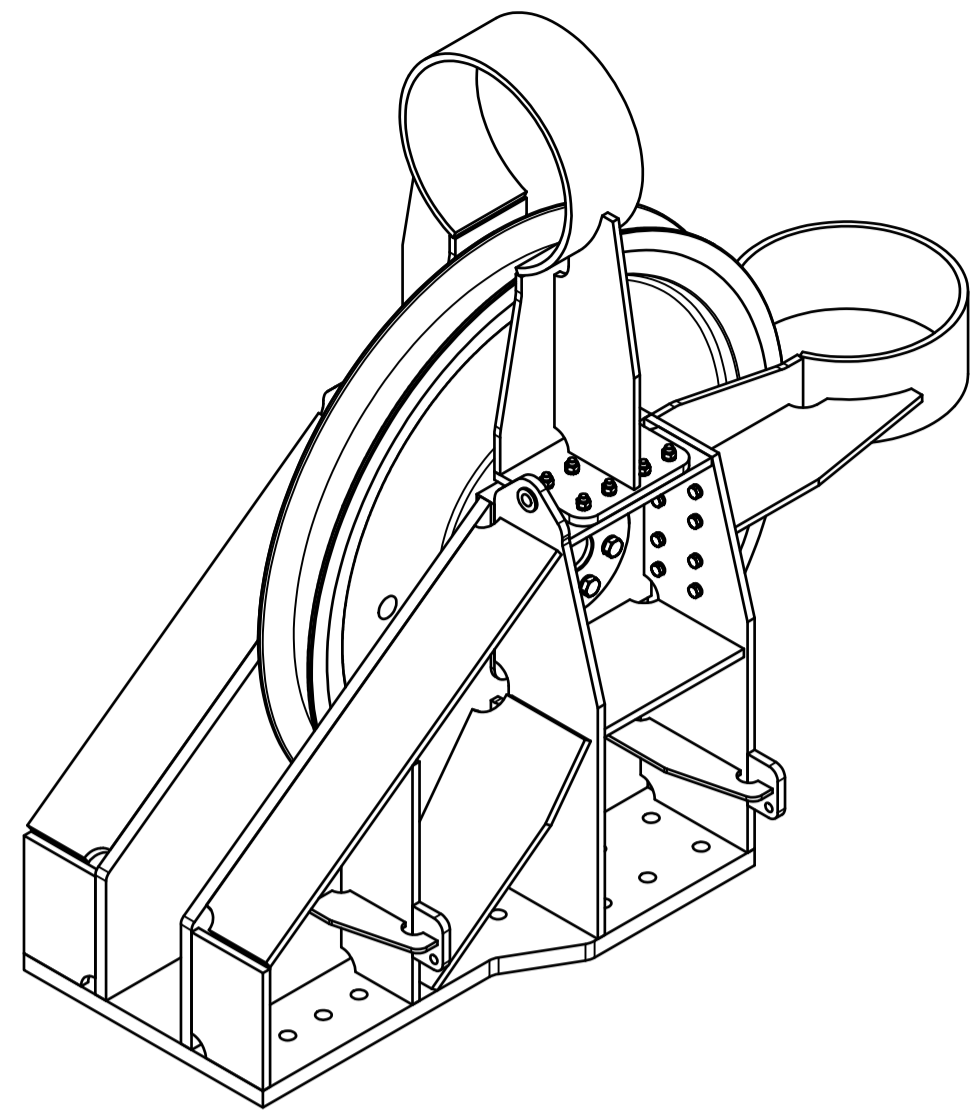
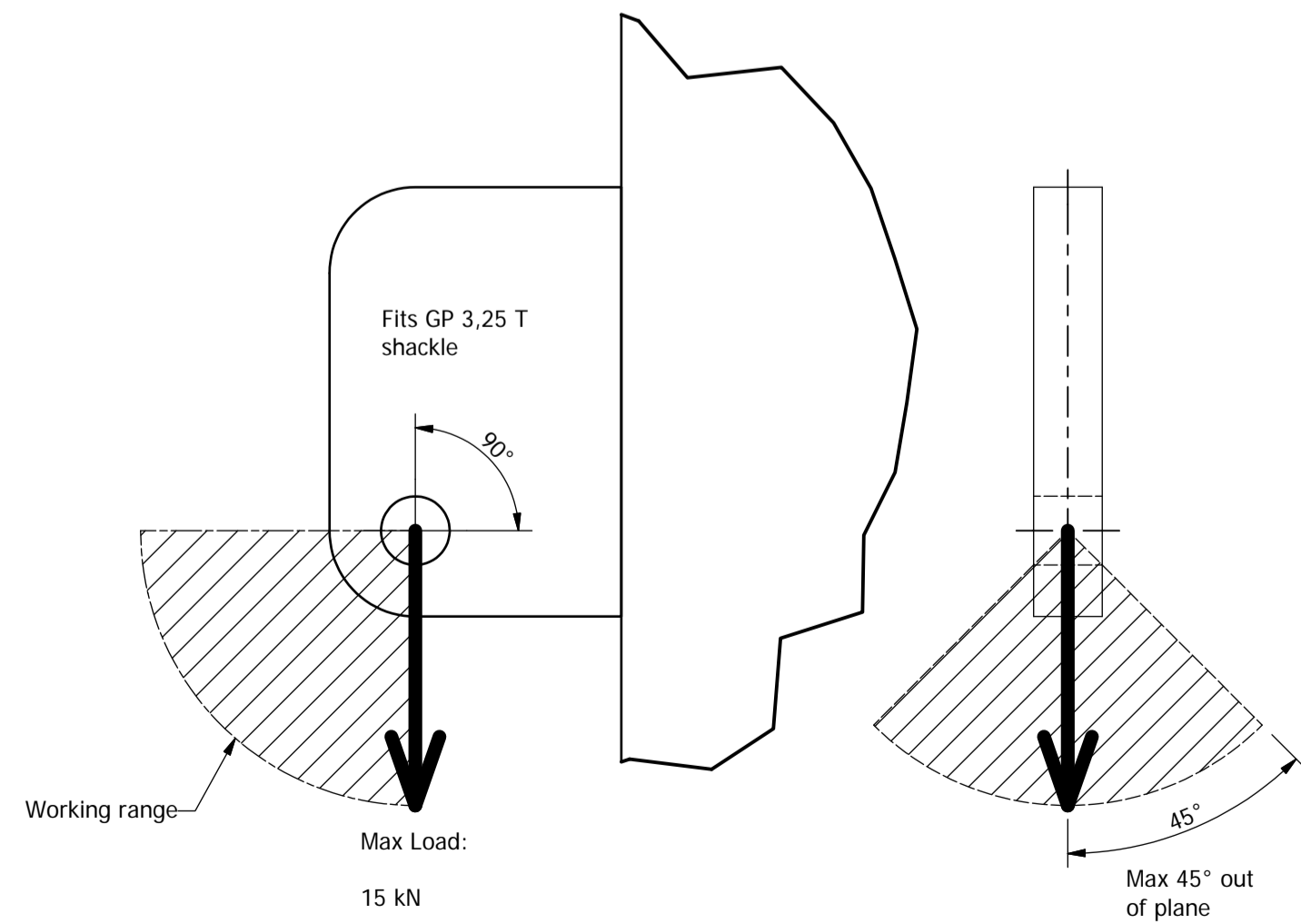


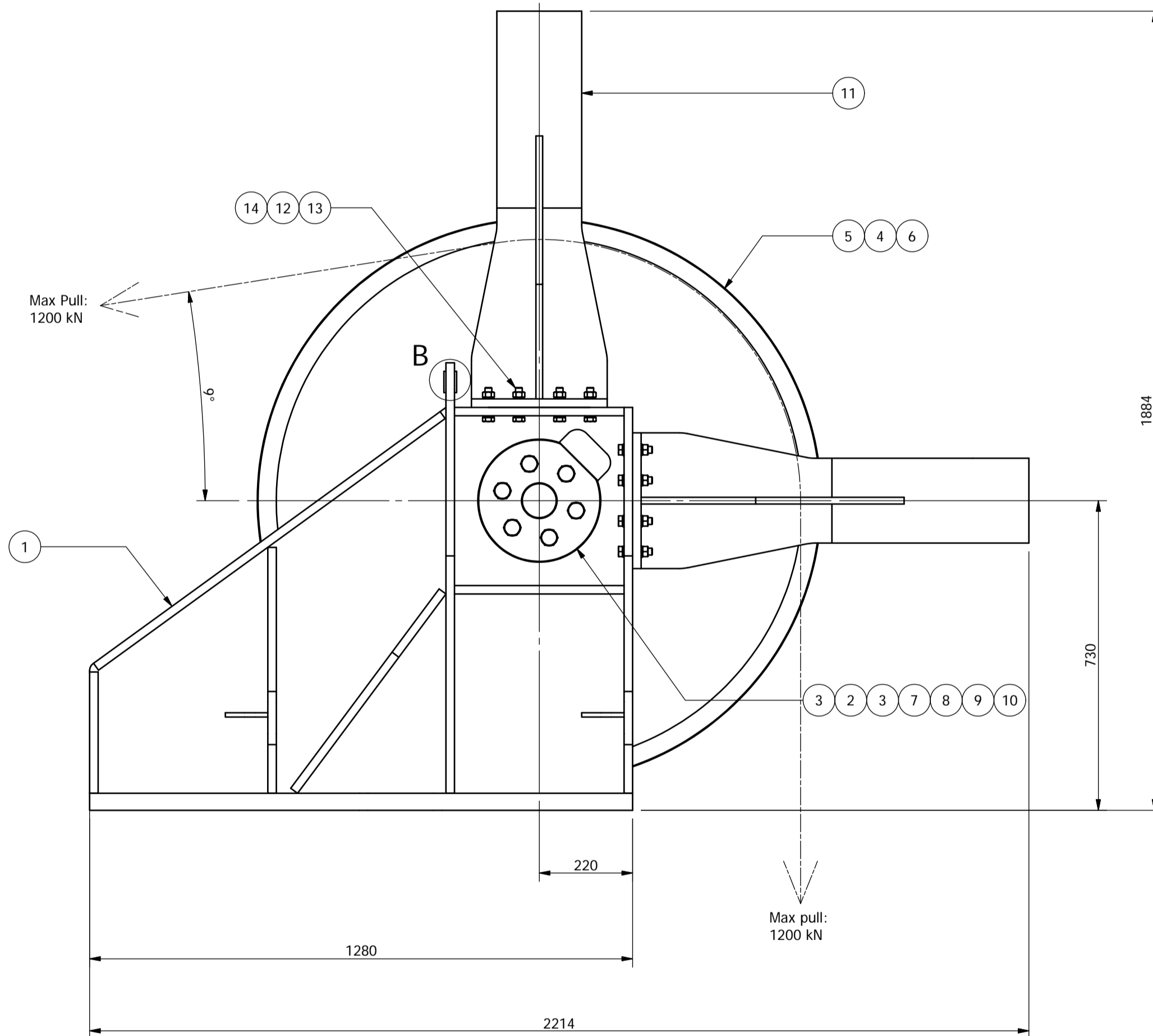
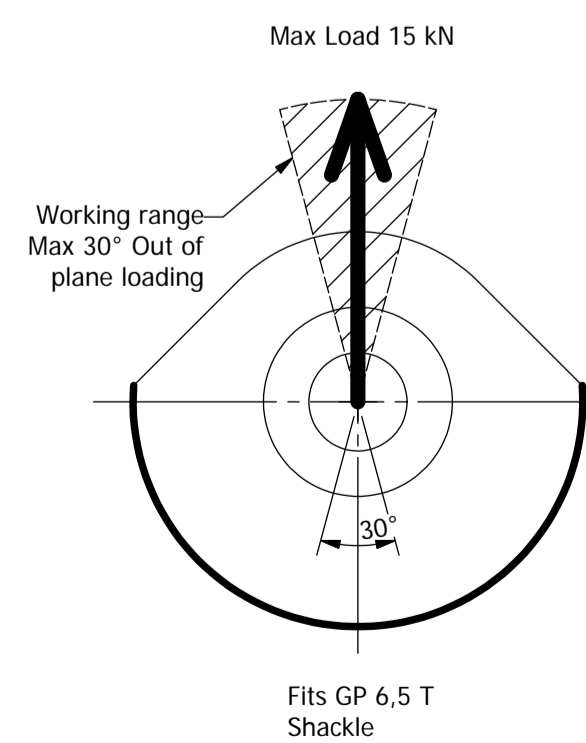
(1:15)



A (1 : 2)



B (1 : 2)



Notes:

Standards applied:

DNV "standard for certification No. 2.22"
NS 3472
EN 1993-1-8
Machine directive
NORSOK R-CR-002

Surface conservation:
NORSOK M501 system 1

Design factors:
DAF: 1,3
Load factor: 1,3

Interface drawing: 00072B

Wrapped angle: 99 DGR +/- 5°
Fillet angle: Max 3°
Max wire pull: 1200 kN

Item	Qty	Description	Designation	Material	Mass
14	32	Nut - DIN 934 - M16 - Gr 8 - HDG	X00020		0 kg
13	32	Bolt - DIN 931 - M16x70 - Gr 8.8 - HDG	X00019		0,1 kg
12	64	Washer - Nord-Lock - NL16	X00018		0 kg
11	2	Wire guard	00059		114,4 kg
10	2	Bearing journal - radial - SBT 240x245/50	X00014		0,1 kg
9	2	Lubrication Nipple - DIN 71412 A - M10x1 - A4	X00017		0 kg
8	12	Bolt - DIN 933 - M24x50 - A480	X00016		0,3 kg
7	12	Washer - Nord-lock - NL24ss - A4	X00015		0 kg
6	2	Thrust washer - 240x330/19	00065		0,8 kg
5	1	Sheave - wire - ø1330 x PCD 1232 x 190 x 77	00056		663,5 kg
4	1	Bearing journal radial - 240x280x150	00064		21,5 kg
3	2	Axle holder - disc - 240x290x20	00066		7,5 kg
2	1	Pin bearing - 240x300	00068		103,4 kg
1	1	Sheave house - vertical	00058B		1142,7 kg

Total weight:
Approx 2200 kg.

Rev	Date	Text	Team	Contr.	Godkj.
A	20.08.09	Bolt holes moved	SW	JAV	
O	06.08.09	Issued for construction	SW	JAV	

Gleipnir

Longhammerveien 7
5536 Haugesund - Norway

post@gleipnir.no
www.gleipnir.no

Projection: NS-ISO 2768-1m
Scale: 1:10
Gen. Tol.: NS-EN 287-1 / 288
Gen. Weld.:
Repl. for:
Repl. by:

Block Lead - Vertical
- Max pull 1200 kN -
wrapped angle 99 DGR

Drwg No.: 00071A
Reference:

Rev.: A
Sheet: 1 of 1