

**General notes:**

- Remove all debris/dirt
- Preservation of parts in accordance with specifications on order

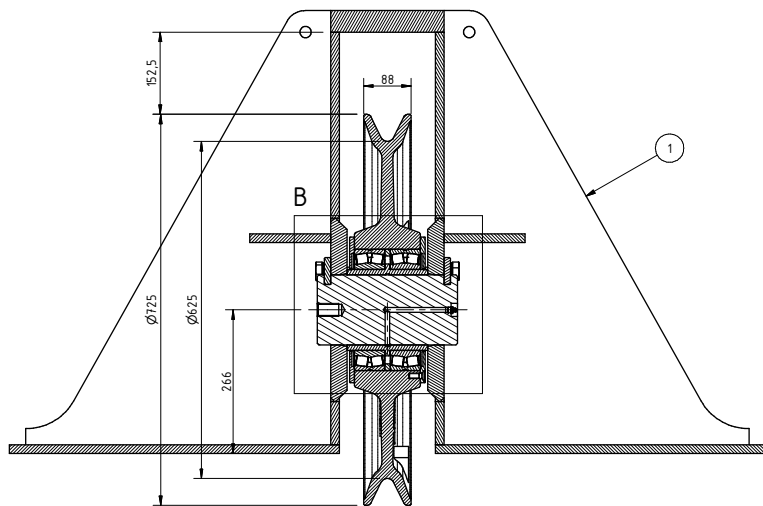
**Material traceability:**

- Mark part/structure with an unique GM-number supplied by Gleipnir AS on order
- All plates of a welded structure to be marked with the material certificates Charge ID

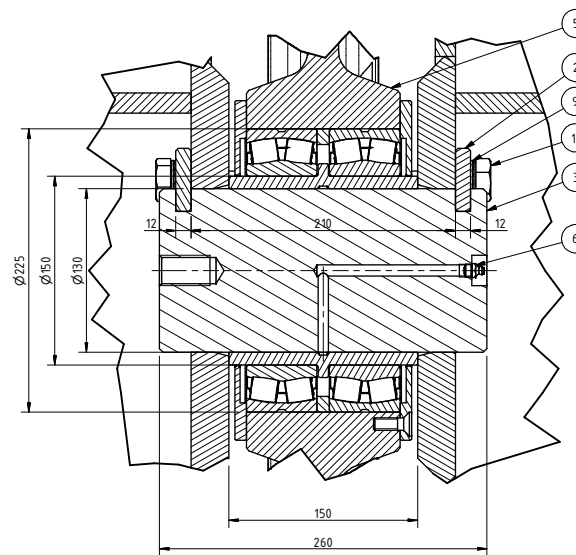
**Material Requirements in acc with: GLST-Z-SA-0001**

c ↑

A-A (1 : 7)



B (1 : 3)



**TECHNICAL NOTES:**

- Design and manufacturing in acc. to DNV lifting appliances.
- SWL: 28T.
- DAF: 1.3
- TD: -20°C
- Max fleet angle 4 degrees in, 1 degree out.

Note padeyes are only for onboard moving. Not for on/off loading between vessel and platform etc.

Item	Qty	Description	Designation	Material	Mass
11	4	Screw - M20x45	ISO 4017	A4-70	0,2 kg
10	3	Split Pin - 5x36	ISO 1234	A4	0 kg
9	4	Washer - 20	Nordlock	NL 20 SS	0 kg
7	3	Nut - M27x3	ISO 4034	A4	0,2 kg
6	1	Lubricating Nipple, M10x1	DIN 71412A	A4	0 kg
5	1	Sheave - HD - 650x725/150	03-0001B-XX		110,7 kg
4	3	Safe guard bolt - M27x3-250	01720-1	W 1.44.18	1,3 kg
3	1	Bearing pin - AP -12 - 130x210	01719-1	W 1.44.18	27,4 kg
2	2	Locking plate	01718-1	W 1.44.04	0,8 kg
1	1	Block house	01703-1	S355K2+N	465,9 kg

Rev.	Date	Note	drw. by	chck	Appr.
2	06.08.13	SWL incr. wire incr.			
1	13.06.2013	Issued for commnets			

Tol. prin:	Fits. Tol.:	Geom. tol.:	Gen. Tol.:	Gen. Roughness:	Break all sharp edges
ISO 8015	ISO 286	ISO 1101	ISO 2768-1m	3.2	
Projection:	Sheet size: A2	Scale: 1:7	Document type:	Repl. for:	Repl. by:

**Gleipnir**

Gleipnir AS  
Longhamarvegen 7 - N-5536 HAU  
www.gleipnir.no - post@gleipnir.no

Title: **Lead block - V - HD - 650x725/150**  
for ø34mm wire  
SWL 28T

Drwg. No.: 01721-2

Rev.: 2

Sheet: 1 / 1

Total Weight: 610,8 kg