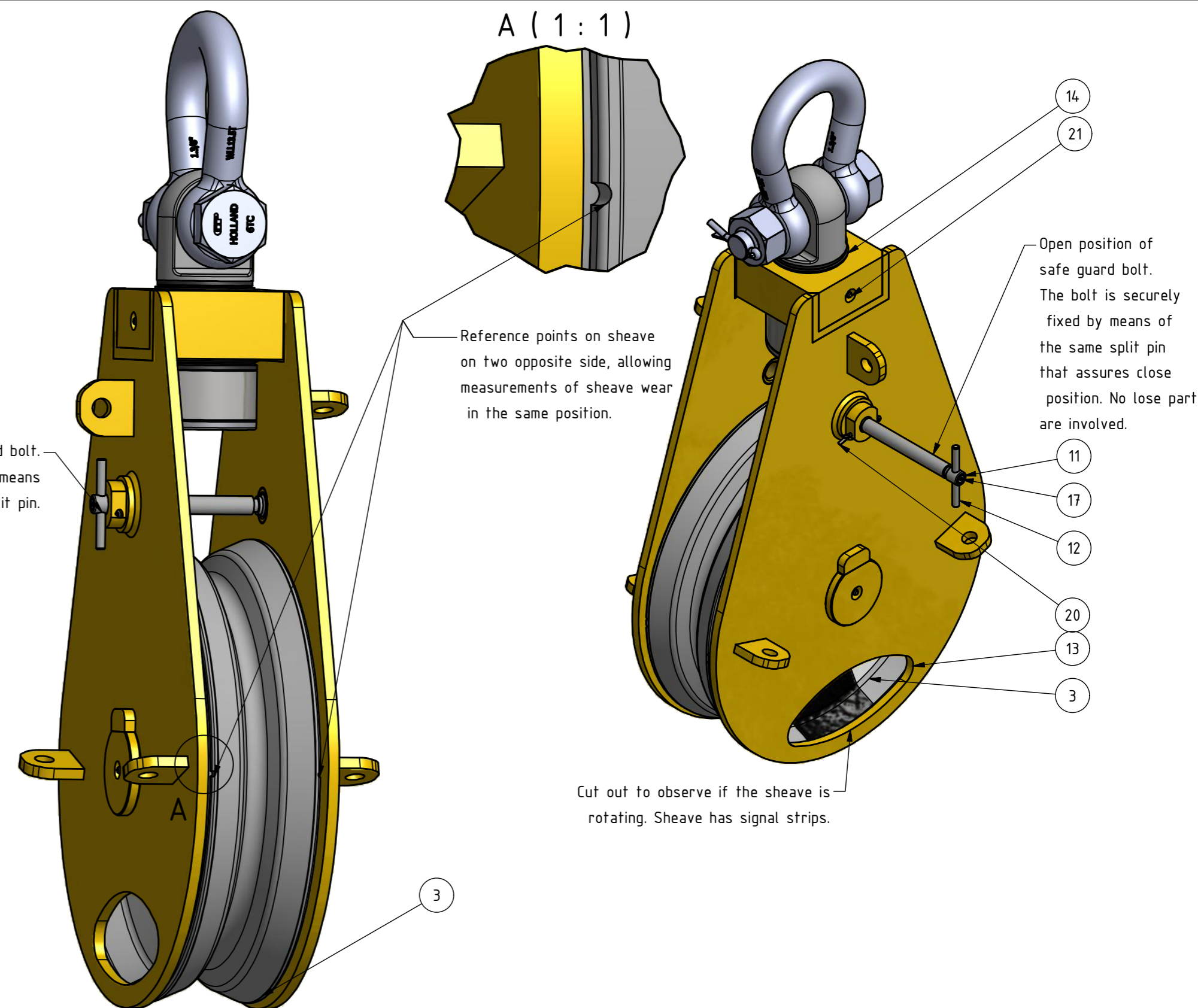
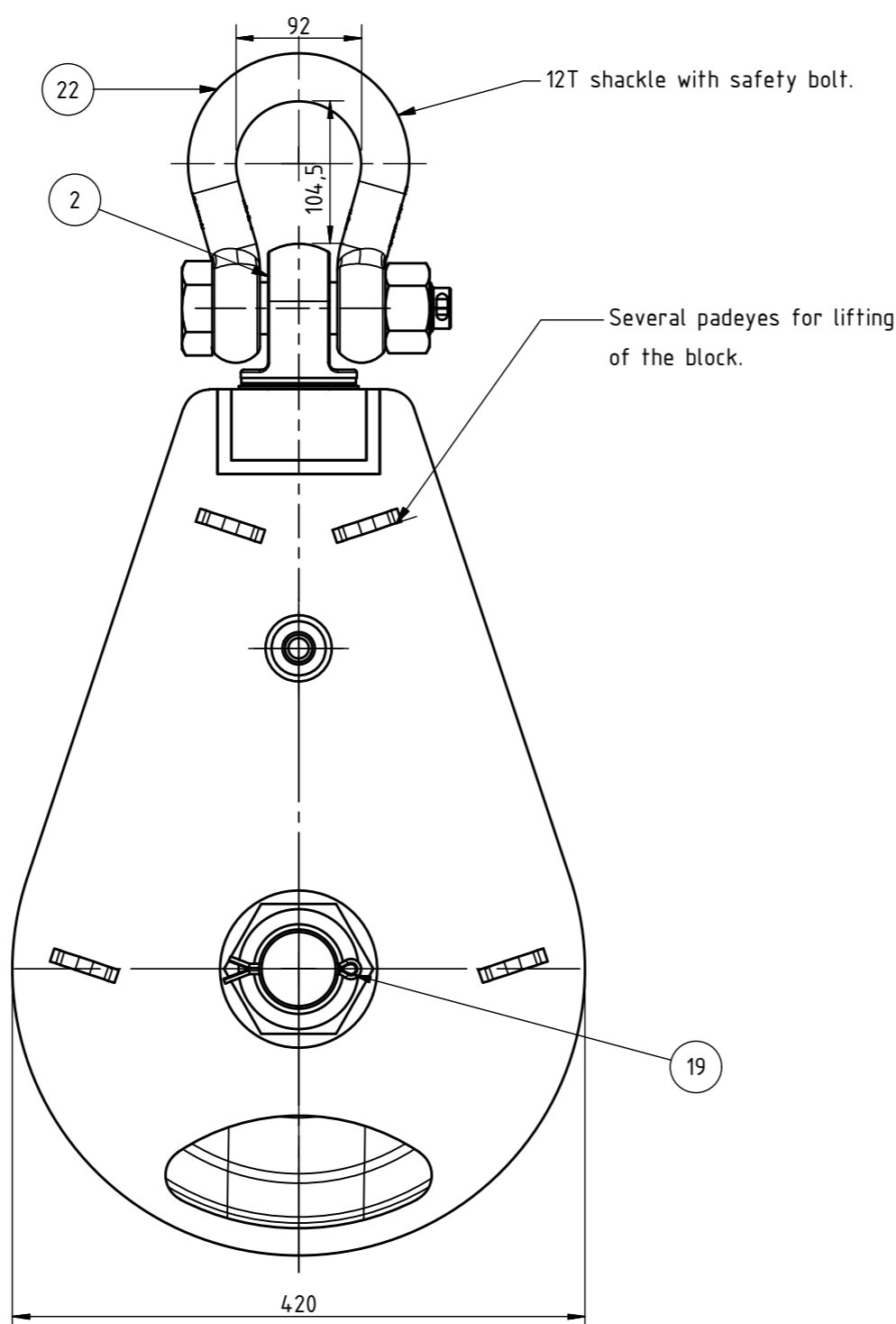
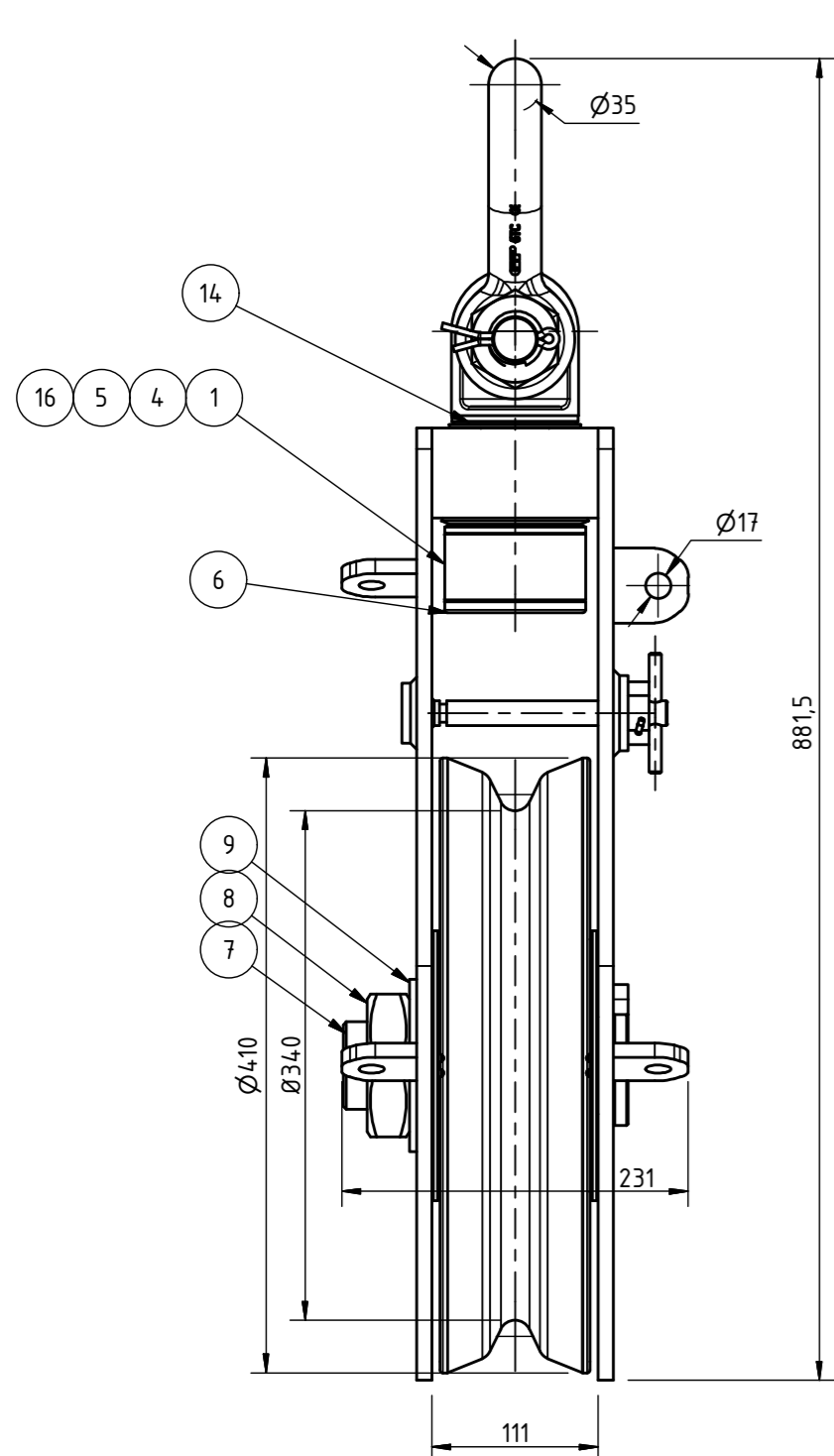


Block in horizontal position for reeving the wire rope.
 All operations can take place in this position.



Technical specifications

SWL: 6T/60kN
 Ψ : 1.3
 MBL: 5:1

TD: -20°C
 Ambient temperature: -20°C to +60°C

Preservation: ISO 12944 - C5M - M

Top connection: Shackle with safety bolt
 WLL 12T
 EN 13889
 US Fed. Spec. RR-C-271 Type IVA Cl. 3, Gr. A
 TD -20°C
 Weight: 80kg

NOTES:

Design, materials and manufacturing in acc. with:
 1) DNV, rules for certification No. 2.22, Lifting appliances, October 2008
 2) Machine directive
 3) Sfs, Statoil sikker sikring
 4) Norske Sjøfartsdirektoratet
 5) NORSOK R-002

MBL is defined as followed:
 MBL = DLx5
 DL is defined as followed:
 0.75x Ψ xSWL
 In acc. with reference 1.

Is it up to operator to ensure that the real dynamic coefficient does not exceed the design dynamic coefficient.

Item	Qty	Description	Designation	Material	Mass
22	1	GP bow shackle WLL 12T			4,9 kg
21	2	Lubricating Nipple - M6x1	DIN 71412 A		0 kg
20	1	Split Pin - 4x50	ISO 1234		0 kg
19	1	Split Pin - 8x80	ISO 1234		0 kg
17	1	Screw - M5x20	ISO 10642		0 kg
16	4	Screw - M8x25	ISO 10642		0 kg
15	1	V-Ring - V-80A	V-80A		0 kg
14	1	V-Ring - V-70A	V-70A		0 kg
13	1	Blockhouse	01801-1		34,8 kg
12	1	Rod - 8x80	01796-1		0 kg
11	1	Screw safe guard - M20x182	01795-1		0,3 kg
9	1	Washer - M64	01793-1		0,3 kg
8	1	Nut - M64x4	01792-1		1 kg
7	1	Bearing pin - N - M64x4 - 65x135	01791-1		4,8 kg
6	1	Cover - 94x8	01790-1		0,3 kg
5	1	Axle holder - 66x15/6	01789-1		0 kg
4	1	Bearing - J - RA - $\varnothing 45 \times \varnothing 55 - \varnothing 80 \times 8 / 63$	01788-1		0,6 kg
3	1	Sheave - W - ST - M - 340x410/100-20	01786-1		31 kg
2	1	Headfitting - M45x4.5	01782-1		3,8 kg
1	1	Nut - M45x4.5	01781-1		2,1 kg

Rev.	Date	Description	ID	SW	SW
1	18.09.2013	Issued for comments			

Tot. prn:	Fits. Tol:	Geom. tol:	Gen. Tol:	Gen. Roughness: 3,2	Break all sharp edges
ISO 8015	ISO 286	ISO 1101	ISO 2768-1m		
Projection:	Sheet size:	Scale:	Document type:	Repl. for:	Repl. by:
	A2	1:4		Ref: 01798-1	

		Title: Reeve block - ST - 340x410- SWL 6T for $\varnothing 16 - \varnothing 20$ mm wire	
Drwg. No.:	Rev.:	Sheet:	Total Weight.:
01799-1	1	1 / 1	79,3 kg