

HV13-1200-1

TEKNISK BROSJYRE

Innholdsfortegnelse:

Introduksjon	2
GA Tegning	3
Mekanisk datablad.....	4

HV13-1200-1

INTRODUKSJON

Dette er en SWL 13tonns vinsj på midtre laget. Modell nr 1200-1 er vinsj med hagglund motor som egner seg for hurtigere operasjoner en modell 1200-73.

Dette er en «constant tension» vinsj; constant tension er et last system som brukes når vinsj skal løfte/trekke en konstant vekt. Ofte brukes det i marine operasjoner hvor vinsjen festes i havbunn i en forankring og noe guides ned, eller når vinsjen skal løfte/dra en vekt som er variabel fra et annet punkt.

Dette er typisk en maritim vinsj om brukes på båt hvor det er mindre dekkplass, og hvor de trenger hurtige vinsjer.

Vinsjen kan også komme med sveiseramme som kan sveises direkte til dekk.

Vinsjen kan leveres med:

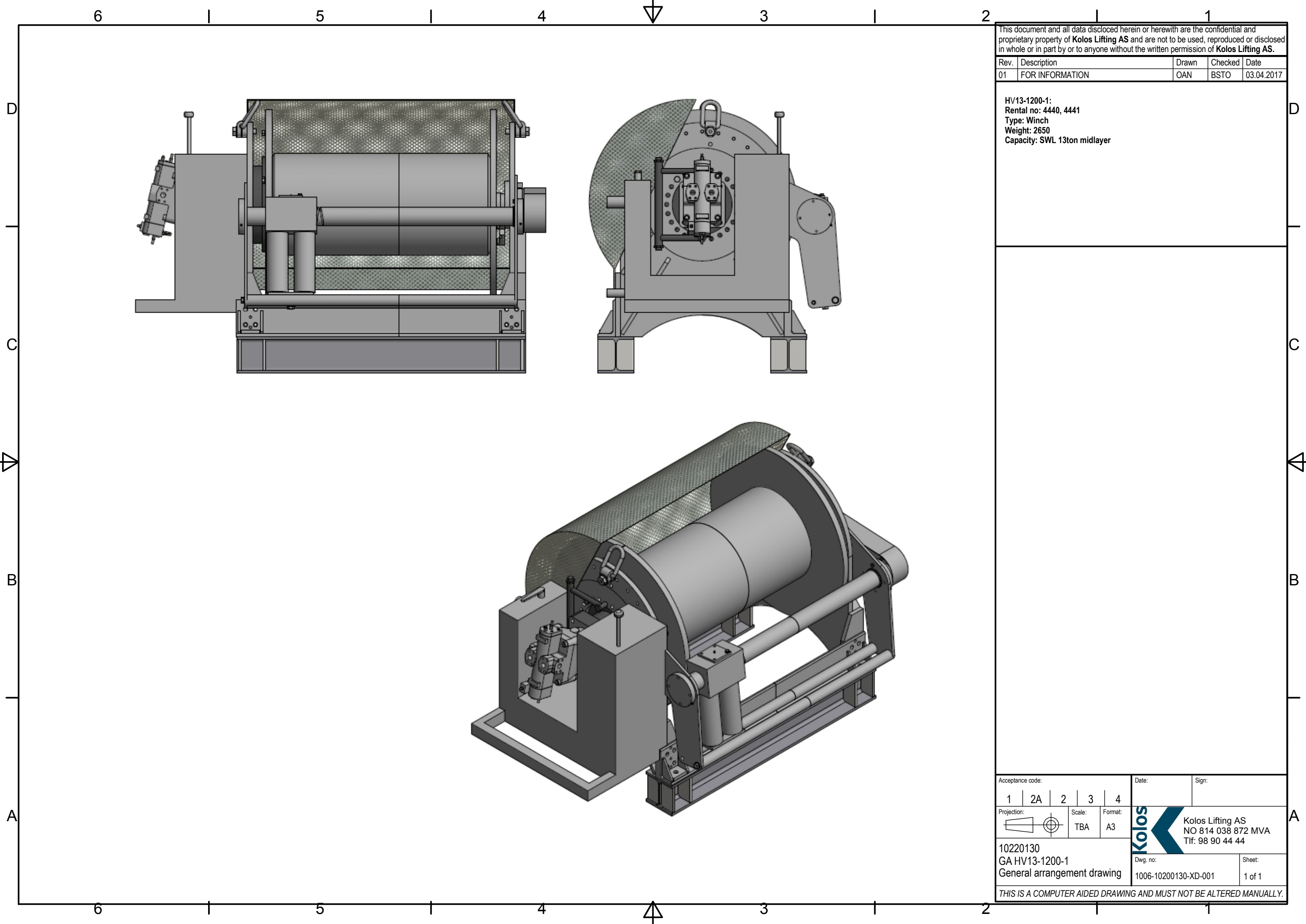
- CE Market iht maskindirektivet
- Produsert iht DNV for Lifting and offshore operations
- Kan leveres med automatisk spoole apparat.
- Leveres med godkjent løfteskrev.



This document and all data disclosed herein or herewith are the confidential and proprietary property of **Kolos Lifting AS** and are not to be used, reproduced or disclosed in whole or in part by or to anyone without the written permission of **Kolos Lifting AS**.

Rev.	Description	Drawn	Checked	Date
01	FOR INFORMATION	OAN	BSTO	03.04.2017

HV13-1200-1:
 Rental no: 4440, 4441
 Type: Winch
 Weight: 2650
 Capacity: SWL 13ton midlayer



Acceptance code:	Date:	Sign:
1 2A 2 3 4		
Projection:	Scale: TBA	Format: A3
10220130 GA HV13-1200-1 General arrangement drawing	Kolos Lifting AS NO 814 038 872 MVA Tlf: 98 90 44 44	Dwg. no: 1006-10200130-XD-001 Sheet: 1 of 1
THIS IS A COMPUTER AIDED DRAWING AND MUST NOT BE ALTERED MANUALLY.		



02	16.02.2016	UPDATED HEADER	OAN	BSTO	TNU
01	10.07.2007	ISSUED AS BUILT	OHA		
Rev	Date	Reason for issue	Made by	Chk by	Appr. by

P.O. Number	Package title
NA	WINCH, HYDRAULIC 13,0T

Customer	Date/Sign					
(For project use only)						
	<table border="1"> <tr> <td>1</td> <td>2A</td> <td>2</td> <td>3</td> <td>4</td> </tr> </table>	1	2A	2	3	4
1	2A	2	3	4		

Project code	Area/Location	Article group
NA	NA	1006

Rental number	Item number	Alias number
4440, 4441	10220130	NA

Document title
MECHANICAL DATA SHEET FOR HV13-1200-1

SDRL Code(s)	NA	Page 1 of 3
Document No.	1006-10220130-DS-002	

MECHANICAL DATA SHEET FOR HV13-1200-1

1 General

1.1	Type of equipment	Hydraulic Driven Winch SWL 13T
1.2	Owner	Kolos Lifting AS, Skvadronveien 29, 4050 SOLA
1.3	Supplier	Kolos Lifting AS, Skvadronveien 29, 4050 SOLA
1.4	Manufacturer	K. LUND Offshore AS, Skvadronvegen 24, 4050 SOLA
1.5	Model number	HV13-1200-1
1.6	Number ea.	2
1.7	Year of manufacture	2007
1.8	Codes	Maskinforskriften FOR-1994-08-19-820 Machinery Directive 98/37/EC EN 13001 DNV 2.22 Lifting Appliances
1.9	NORSOK type	U99
1.10	Manning	Normally unmanned
1.11	Certificates	ILO Form 2
1.12	Ambient conditions Temperature Atmosphere Inertia Hazardous area	-20 to + 30 °C Offshore, saliferous, 100% humidity +/- 0.1 g horizontal, any direction, +/- 0.2 g vertical Zone 1
1.13	Design capacity	13T mid drum
1.14	Lifting speed	250m/min on 6 th layer reduced volume on motor 125m/min on 6 th layer full volume on motor
1.15	Classification of machinery	M5

2 Hydraulic

2.1	Drive system Motor Brake Gear	Radial piston motor 8800 cm ³ /rev Hägglunds CA140 Hydraulic integrated, failsafe, spring applied. NA – Direct
2.2	Oil supply Pressure bar Flow l/min	Max 350 Max 450
2.3	Power demand kW	Max 220
2.4	Oil type	Mineral oil with high viscosity index and with high pressure- and anti fouling –additives. VG 32 (32 cSt @42 °C)

3 Mechanical

3.1	Wire rope Ø mm	28
3.2	Drum Barrel Ø mm Length mm Flange Ø mm Storage capacity m Number of layers	559 1200 1040 550 6
3.3	Connections Main P Tank T Casing Drain D LS LS	Quick Connects 1 1/4" FM Snap-tite 71 1 1/2" M Snap-tite 71 3/4" M Snap-tite 71 1/4" FM Snap-tite 71

MECHANICAL DATA SHEET FOR HV13-1200-1

3.4	Size	LxWxH mm	2259x1384x1444
3.5	Weight		
	Net	kg	2650 kg (incl. spooling device)
	Tara	kg	
	Max Gross	kg	
3.6	Fasteners		8x M24 8.8
3.7	Fastener torque	Nm	665
3.8	Lifting arrangement		Chainsling according to Machinery directive.
3.9	Misc. equipment		
	Wire guiding		Automatic geared, adjustable for 0-90° wire-out direction with the horizontal plane, max allowable fleet angle is 5°
	Service		Constant Tension Active Heave Compensation