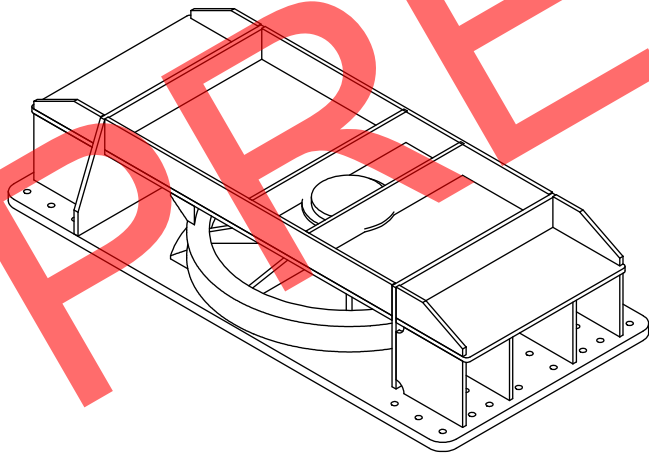
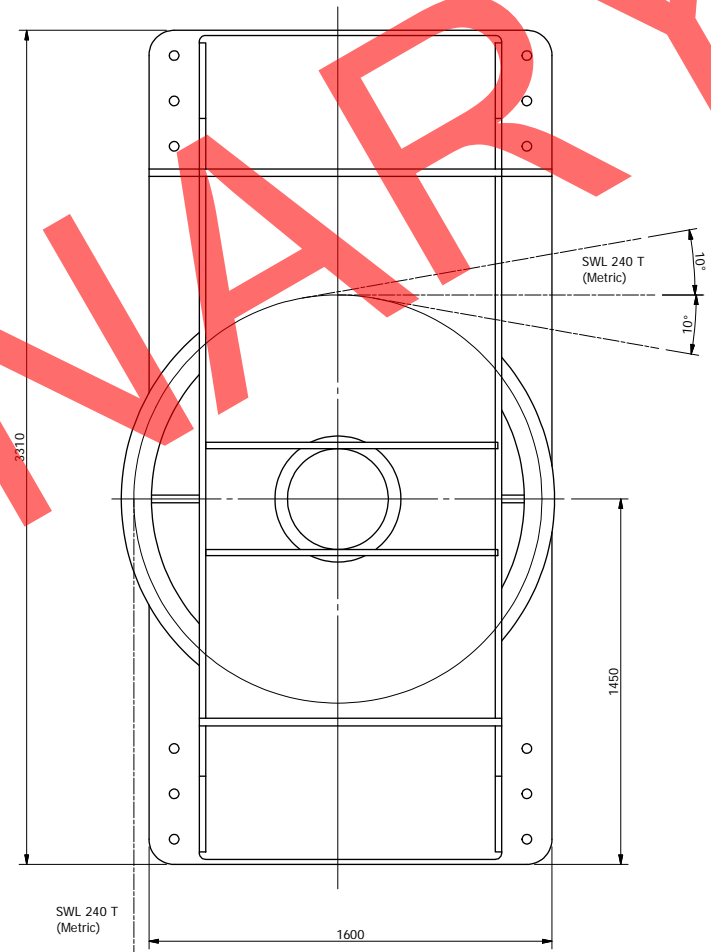
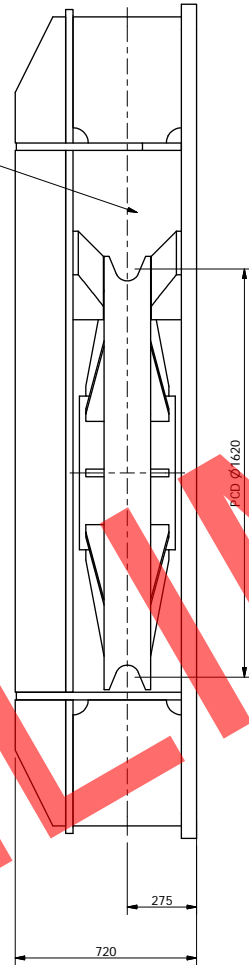


Clearance for wire socket



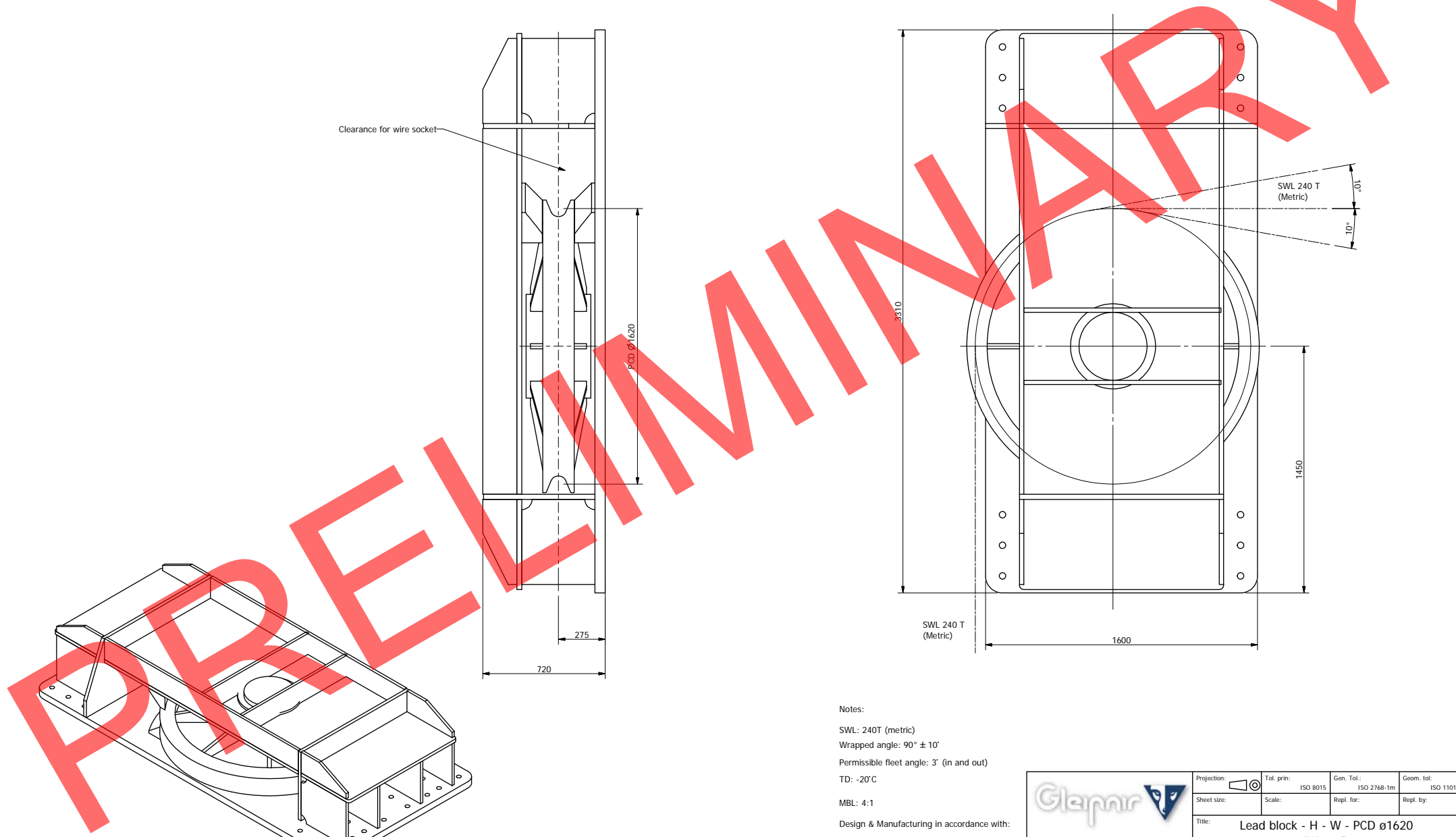
Notes:

- SWL: 240T (metric)
- Wrapped angle: $90^\circ \pm 10^\circ$
- Permissible fleet angle: $3'$ (in and out)
- TD: -20°C
- MBL: 4:1
- Design & Manufacturing in accordance with:
- DNV - Standard for certification - No. 2.22

1	23.05.11	Issued for comments	SW	JAV	
Rev	Date	Note	draw. by	chck	Appr.

	Projection:	Tol. prin: ISO 2768-1m	Gen. Tol.: ISO 2768-1m	Geom. tol: ISO 1101
	Sheet size:	Scale:	Repl. for:	Repl. by:
Title: Lead block - H - W - PCD ø1620 SWL 240 T for ø90mm wire				
Drwg. No.:	T269-0010			Rev.: 1
Reference:				Sheet: 1 of 1

Longhammerveien 7
 5536 Haugesund - Norway
 post@gleipnr.no
 www.gleipnr.no



This drawing is the property of Gleipnir AS. It is not to be reproduced or distributed in whole or in part, by any means, without the written permission of Gleipnir AS.