

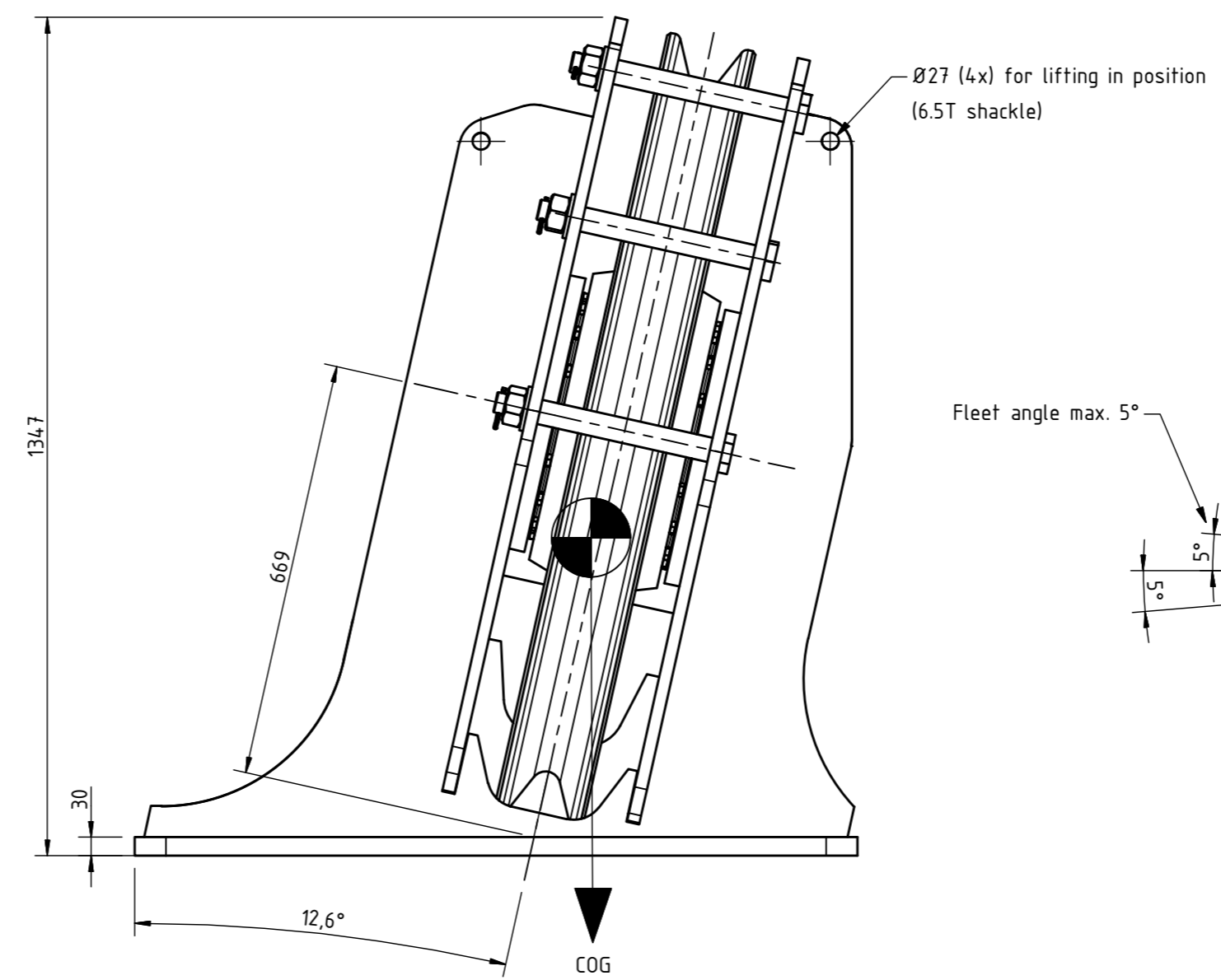
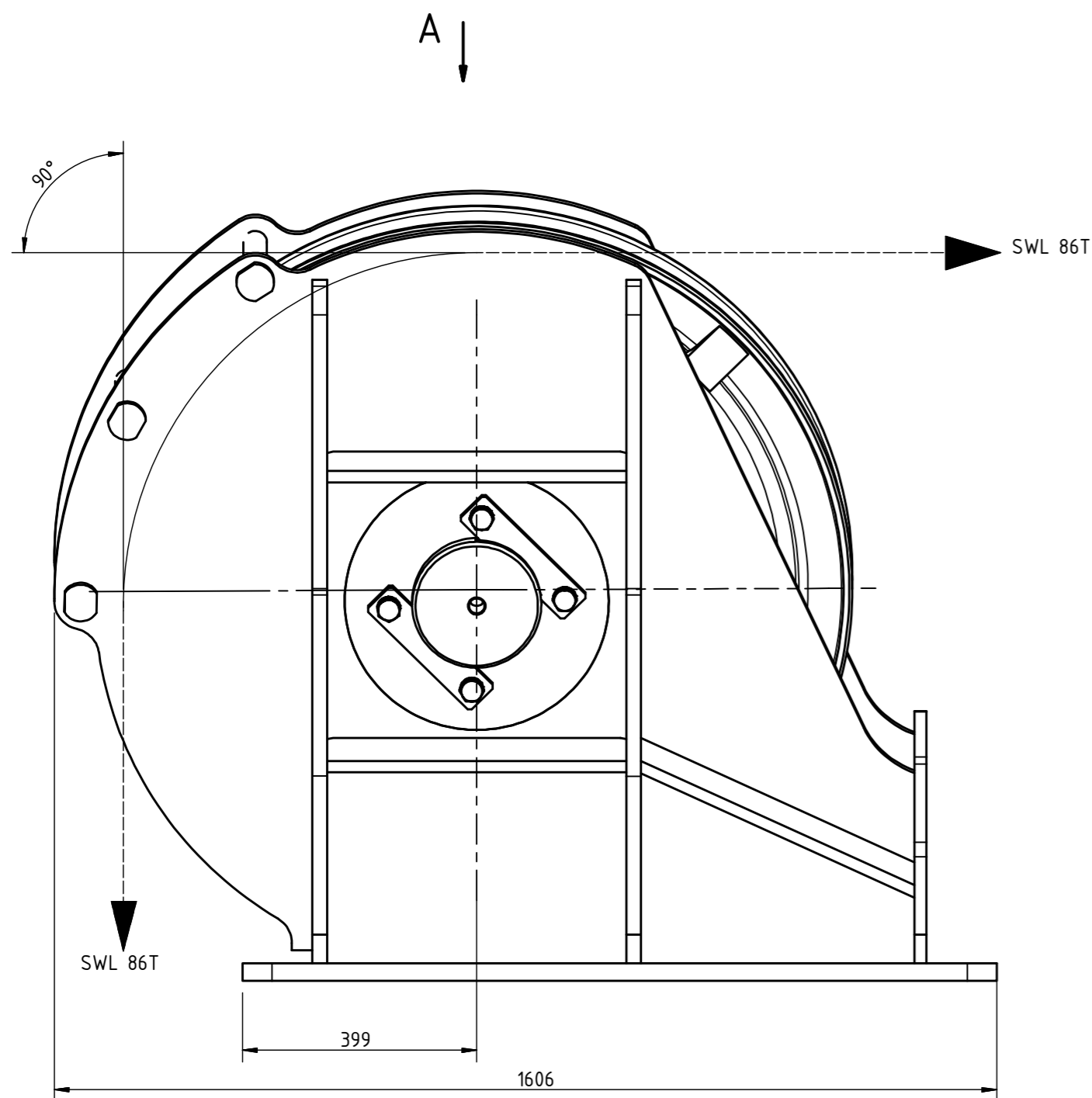
General notes:

- Remove all debris/dirt
- Preservation of parts in accordance with specifications on order

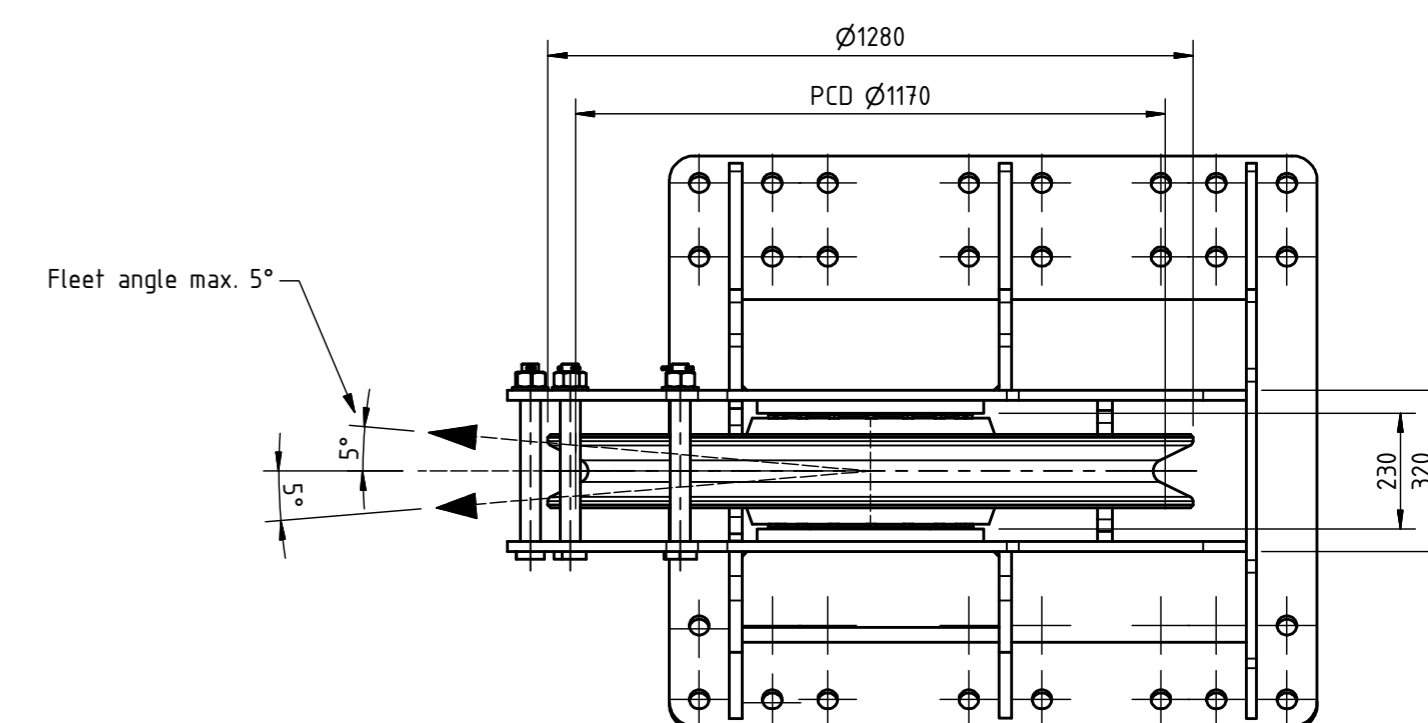
Material traceability:

- Mark part/structure with a unique GM-number supplied by Gleipnir AS on order
- All plates of a welded structure to be marked with the material certificates Charge ID

Material Requirements in acc with: GLST-Z-SA-0001



View A (1:15) (rotated)



Technical specifications

SWL (wire pull) = 86T

Wrapped angle: 90°

Add. safety angle: 5°

Fleet angle: 5°

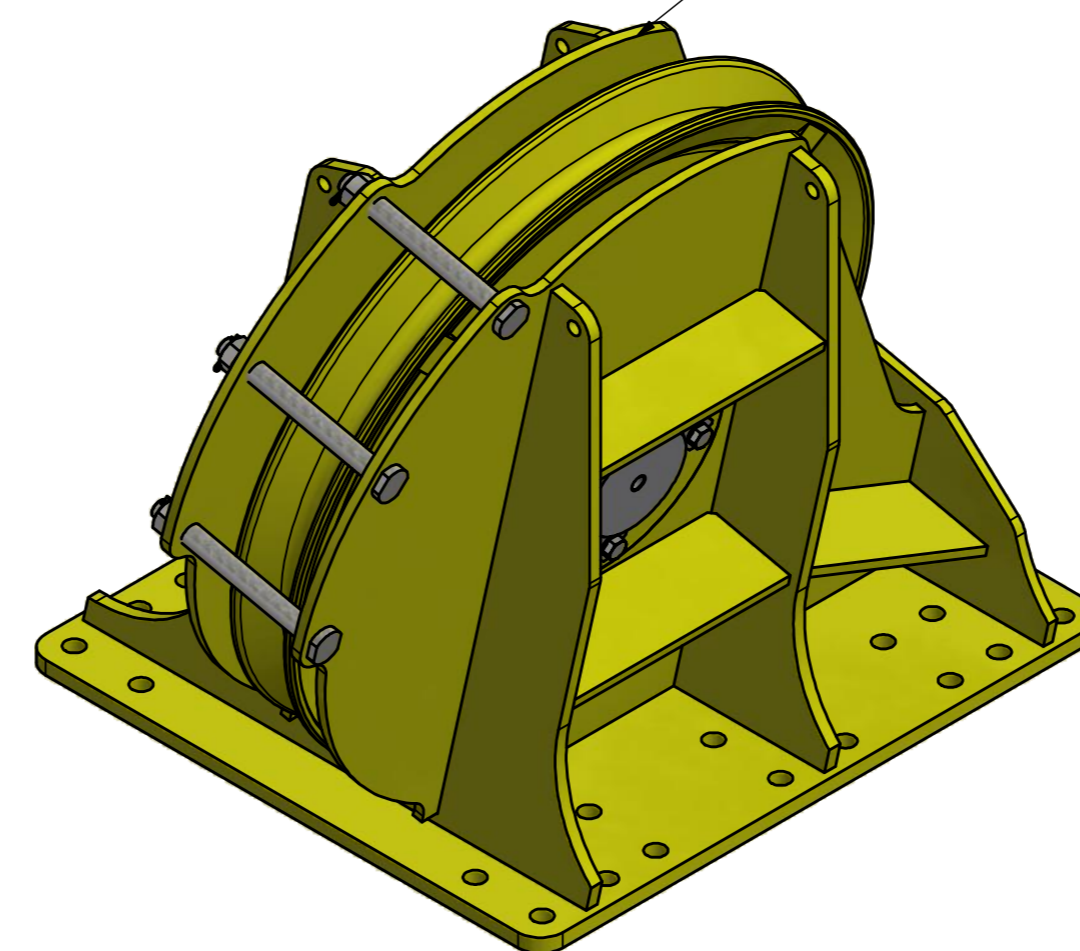
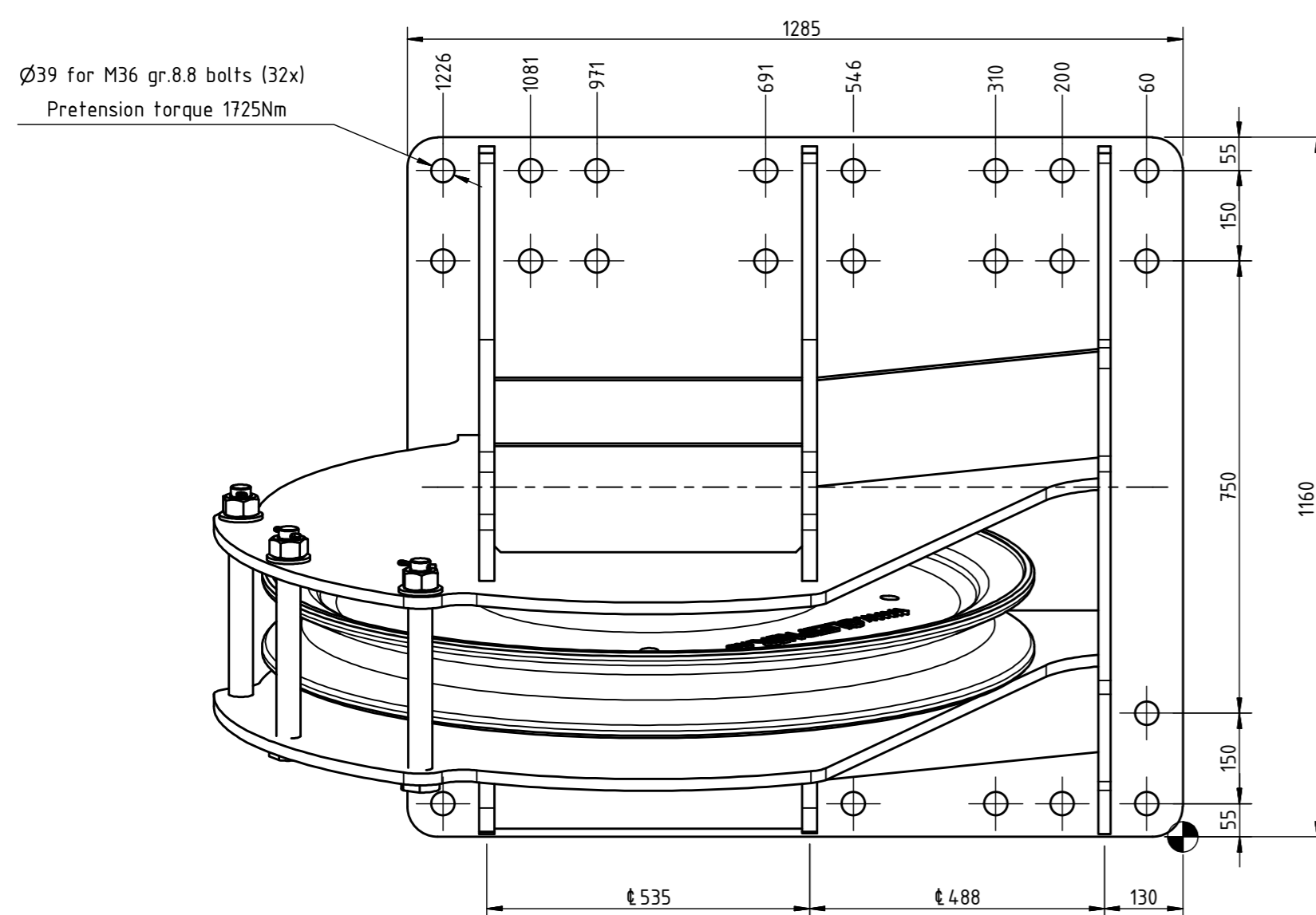
Resultant force on the sheave: 158T

Wire size = Ø58

Design temperature TD = -20°C

Design in accordance with: DNV 2.22

Lifting appliances - Offshore cranes



- 1
- 2
- 3
- 4
- 5
- 6
- 7
- 8
- 9
- 10
- 10
- 11

Qty	Description	Designation	Mass
11	Lubricating Nipple, M10x1	DIN 7412A	0 kg
10	Split Pin - 6.3x50	DIN 94	0 kg
9	Nut - M36	DIN 934	0,4 kg
8	Screw - M24x60	DIN 933	0,3 kg
7	Washer - M40	DIN 125A	0,1 kg
6	Washer - M24	Nordlock	0 kg
5	Axle holder ø220 pin	16-0003	1,8 kg
4	Bearing Pin Custom	11-0016	117,1 kg
3	Sheave - W - ADI - PCD1170x1280x145/230	03-0002A	561,4 kg
2	Safety bolt - M36X40X320	03433-0	4 kg
1	Blockhouse	03432-0	1172,7 kg

Desg. by:	ID	Document type:	Document status:	Scale:	Projection:	Sheet size:	Ref:
Desg. by:	PS	25.11.2015	-under approval-	1:1		A2	03431-0
Appr. by:	JAV	25.11.2015	-GA drawing-				

**GLEIPNIR**  
Gleipnir AS  
Haraldsgata 140 - N-5527 HAU  
www.gleipnir.no - post@gleipnir.no

Title: **Lead block - V - W - ADI - PCD1170-230-1-157**  
For Ø58mm wire

Drwg. No.: **03430-0** Rev.: **0** Sheet: **1 / 1** Total Weight.: **1875 kg**

This document and all information and data disclosed herein or herewith are the confidential and proprietary property of GLEIPNIR AS. Contravention will be prosecuted.