

THE FOLDABLE TELESCOPIC CRANES **EXPERTS**

MARCH 2025 **EDITION**



MARINE &
OFFSHORE



Fully
foldable



Knuckle
Telescopic



Knuckle



HEILA

ENGINEERED FOR THE SEA

POWER, PASSION, PARTNERSHIP.

Focus on our customer

For over 45 years, Heila has been dedicated to providing top-quality marine cranes, recognized for their structural reliability and built to meet the specific needs of marine, offshore and subsea operations.

Our range includes everything within knuckle telescopic cranes from small to heavy-duty models, with capacities from 3tonm to 1500tonm.

Cranes designed to handle the toughest marine environments with the knuckle boom cranes model HR, fitted with AHC and devoted to subsea operations. Our production processes are streamlined to ensure faster delivery times, because we know how crucial quick turnarounds are for your operations. And while our cranes are built to last, they are also lightweight and compact, making them perfect for specialized applications such as dredging or yacht support vessels.

Always in cooperation with our customers .
Any use for any workboat.

Mission

We supply the most reliable cranes to our customers in the marine and offshore industry. We aim to satisfy their every need with respect to deck cranes among our range.



"Quality, reliability and service are Heila's unique selling points. The company has gathered together a group of true professionals who are reliable and skilled".
Neptune Shipyard BV



"We prefer quality cranes for our vessels and value at the same time a good understanding and relationship with our suppliers. No problem for Heila: our long-term cooperation with Heila proves this. The new Heila will emerge".
Damen Shipyards, Hardinxveld

THE FOLDABLE
TELESCOPIC
CRANES **EXPERTS**



Our cranes are synonymous with safety, soundness, compactness, light weight and low operation costs.

HEILA CRANES GROUP:

Heila Cranes SpA in Italy

Heila Cranes Nederland BV in The Netherlands

HIGHLIGHTS:

- Over 45 years of experience
- Over 5,500 marine cranes engineered and manufactured
- 220 cranes certified by class in the recent years
- Outstanding in-house engineering capability



FOUNDED IN ITALY, WITH WORLDWIDE PRESENCE

Heila Cranes has service, sales and dealer hubs throughout the world. This makes it possible to provide our customers with an optimal service.

Check our website for a Heila representative in your area.



HEILA FOLDABLE TELESCOPIC CRANES: THE HLM AND HLRM SERIES

Focus on our customer

Heila is specialized in foldable telescopic cranes that are of superior quality. This is the result of more than 45 years of experience and technical expertise in designing, producing components and developing the manufacturing process to meet the highest quality standards.

Features:

- Originally designed for a marine environment
- Light weight
- Safe & Reliable
- Easy operation
- Easy maintenance
- Robust and compact

Facts:

- More than 3,300 foldable telescopic cranes manufactured and delivered.
- Market leader in foldable telescopic cranes
- First to produce a HLRM 1000 crane; a 70-ton crane featuring a telescopic arm with a maximum reach of 30 m that is very compact in storage position.

THE FOLDABLE
TELESCOPIC
CRANES EXPERTS

Heila Anti-Corrosion Program

HEILA Anti-Corrosion Program, applied on all the cranes we manufacture, ensures that the cranes have a long life in the harsh environment they are daily called to work.

- Complete Surface Treatment: structural design, steel preparation, rounded edges and painting process compliant with ISO 12944- C5M
- High-durability, nickel-chrome or double crossed plated for hydraulic cylinder rods or Nikrom as option.
- Structural bolts coated with Geomet 500 gr.B
- Other screws and bolts made in stainless steel A470 protected with silicone.
- Pins in High strength stainless steel AISI 630
- Hydraulic fittings made in galvanized carbon steel, further protected by a film of corrosion resistant inhibitor and covered with special vulcanised rubber tape.
- Rigid pipes and relevant fittings in AISI316 stainless steel.
- Gear boxes, motors, hydraulic manifolds and components painted compliant ISO 12944- C5M and further protected by a film of corrosion resistant inhibitor.
- Stainless Steel AISI 316 and IP66 for junction boxes and encoders

HEILA Extreme Anti-Corrosion Program [HD 4+]

When the Cranes needs further protection from the marine environment, HEILA has the following dedicated solutions provided as a package called HD4+, that ads the following.



- Rod of cylinders protected with a high hardness special treatment which guarantees: excellent adhesion to the substrate, microcrack free, no porosity, excellent elasticity, very small roughness, rust free time NSS > 2500 hr.
- Hose fittings in AISI 316L.
- Electric components inside JB protected by silicon spray.
- Steel structure metallization according to Norsok 2B, is available as option

HLM CRANES:

Fully foldable
telescopic cranes
with rack and pinion
slewing system.



HLM 25/3S

The HLM cranes with their rack and pinion slewing system are very compact and light. This makes the HLM type ideal for use on small vessels, especially where space is limited. Cranes of this type, our ‘workhorses of the sea’, are indispensable for auxiliary vessels including multifunctional work boats, tugs and pontoons.

CHARACTERISTICS:

- The crane is able to work in any configuration; with boom extended upwards or folded downwards offering great manoeuvrability
- Rotation up to 360°. This is possible because the crane is fitted with a double rack and pinion system with bronze bushes that guarantees safe operation, even at higher heel and trim angles

CONTROL AND SAFETY:

- Stationary fixed control console
- Counterbalance valves directly mounted on each cylinder provide a fast response
- Proportional Electrohydraulic Control Valve Block with internal compensation for simultaneous movements and self-centring manual levers; supplied by primary worldwide producers
- Electrohydraulic load moment limiting device; prevents the crane being overloaded and damaged.

STRONG AND RELIABLE

Doubling the number of racks and cylinders doubles the power of the slewing system. Moreover, the life of these components is extended because the load is shared.

CUSTOMISATION

The HLM crane series is standardised, however, there are a surprising number of options allowing a full customisation.

HORIZONTAL LOAD HLM CRANES

Crane model	nr of extensions		Length of boom (m) and crane lifting capacity (kg)				HEILA Cranes STANDARD Products Table								Revision – 1 Juni 2024	
			3 m	4 m	5 m	6 m	7 m	8 m	9 m	10 m	11 m	12 m	13 m	14 m		
HLM 3	1	m	3.51		5.18											
	S	Kg	1,110		750											
	2	m	3.62		5.29	6.96										
	S	Kg	1,030		680	500										
HLM 6	1	m	3.54		5.25											
	S	Kg	1,710		1,160											
	2	m	3.66		5.33		7.00									
	S	Kg	1,460		1,000		760									
	3	m	3.60		5.24	6.88		8.62								
	S	Kg	1,390		910	670		530								
HLM 8	1	m		4.17	5.82											
	S	Kg		2,330	1,680											
	2	m		4.25	5.85		7.43									
	S	Kg		2,110	1,520		1,200									
	3	m		4.34	5.96		7.60		9.27							
	S	Kg		1,780	1,250		950		770							
HLM 10	1	m		4.64		6.54										
	S	Kg		2,310		1,650										
	2	m		4.69		6.55		8.41								
	S	Kg		2,280		1,620		1,260								
	3	m		4.80		6.65		8.51		10.30						
	S	Kg		2,120		1,440		1,140		940						
HLM 16	1	m		4.94		6.94										
	S	Kg		3,440		2,460										
	2	m		4.96			7.02		9.03							
	S	Kg		3,350			2,330		1810							
	3	m			5.01		7.01		9.01		11.00					
	S	Kg			3,090		2,150		1,640		1,330					
HLM 25	2	m		4.68		6.65		8.62								
	S	Kg		5,170		3,640		2,820								
	3	m		4.81		6.76		8.73		10.58						
	S	Kg		4,940		3,470		2,660		2,200						
	4	m		4.94		6.89		8.86		10.72		12.64				
	S	Kg		4,700		3,280		2,490		2,020		1,710				
	5	m			5.04	6.99		8.96		10.82		12.82		14.72		
	S	Kg			4,520	3,100		2,320		1,850		1,450		1,200		



Data in de table are for harbour conditions

Horizontal loads, lifting by hook in harbour conditions. For the minimum outreach, please check the technical data sheet. HLM cranes can also work offshore.

Features:

- Originally designed for a marine environment
- One (1) cylinder for multiple telescopic movements
- Designed for easy maintenance
- High degree of customisation
- Cranes equipped with winch is possible, please contact our sales department

HLRM CRANES: Fully foldable telescopic cranes & Foldable knuckle telescopic cranes.

HLRM cranes featuring slew bearings and continuous rotation, are available as fully foldable telescopic cranes and as knuckle telescopic boom cranes.

THE BEST LIFTING PERFORMANCE

The fully foldable telescopic cranes are designed to provide the best lifting performance combining exceptional boom strength with a powerful slewing ring rotation system. The cranes are suitable for a wide range of on-board and off board activities including buoy handling and the hoisting of structures and equipment.

NO COMPROMISE ON QUALITY

Heila provides all of the features and uses quality components to construct cranes that offer excellent performances. The cranes are designed for the tough environmental conditions at sea. We protect all of our cranes – big and small – by thoroughly sand blasting them, applying marine paint systems and using stainless steel pipe fittings.

HEAVY DUTY OPERATION

Each crane component is selected and designed for heavy duty operation in a marine environment, they feature:

- Heila Anti-Corrosion Program
- Standard design temperature -20°C +45°C
- Minimum IP 56 protection standard on all electric cabinets and junction boxes on the crane
- Electronic Safety System protects the crane from being overloaded

ALWAYS PUSHING THE ENVELOPE

Starting from the first development of Heila knuckle telescopic boom crane, Heila has always strived to build bigger and better cranes. Heila was the first to build many of the larger cranes of this type, culminating in the HLRM 1000-6S in 2018. This crane is able to lift 14,300kg at a reach of almost 30m and 52,500kg at 13.4m.

Despite its small footprint, it is a high-capacity crane. In combination with various options, including Active Heave Compensation (AHC), AOPS, MOPS, this crane is a cost-effective, highly versatile but compact tool, suitable for many offshore activities, thus greatly reducing mobilisation time of vessels. It is the offshore equivalent of a big Swiss army knife.



Knuckle telescopic boom crane, HLRM 580/3S



Fully foldable telescopic

Fully foldable telescopic cranes with slewing bearing system

HORIZONTAL LOAD HLRM CRANES

Crane model			nr of extensions		Length of boom (m) and crane lifting capacity (kg)																HEILA Cranes STANDARD Products Table						Revision – 1 Juni 2024					
					4m	5m	6m	7m	8m	9m	10m	11m	12m	13m	14m	15m	16m	17m	18m	19m	20m	21m										
HLRM 25	2S	m	4.68		6.65		8.62																									
		Kg	5,170		3,640		2,820																									
	3S	m	4.81		6.78		8.73		10.58																							
		Kg	4,940		3,470		2,660		2,200																							
	4S	m	4.94		6.89		8.86		10.72		12.64																					
		Kg	4,700		3,280		2,490		2,020		1,710																					
	5S	m		5.05	6.99		8.96		10.82		12.82		14.72																			
		Kg		4,520	3,100		2,320		1,850		1,450		1,200																			
HLRM-I 25	2S	m	4.55		6.3		8.15																									
		Kg	6,150		4,420		3,200																									
	3S	m	4.68		6.43		8.28		10.23																							
		Kg	5,800		4,100		3,100		2,400																							
	4S	m	4.8		6.55		8.4		10.35		12.4																					
		Kg	5,560		3,850		2,900		2,200		1,730																					
	5S	m	4.92		6.67		8.52		10.47		12.52		14.63																			
		Kg	5,250		3,650		2,680		1,910		1,460		1,190																			
	6S	m		5.03	6.78		8.63		10.58		12.63		14.74		16.9																	
		Kg		5,000	3,400		2,400		1,750		1,320		1,050		880																	
HLRM 35	2S	m	5.21		7.18		9.15																									
		Kg	5,780		4,170		3,270																									
	3S	m	5.31		7.26		9.22		11.08																							
		Kg	5,480		3,940		3,050		2,520																							
	3SL	m	5.60		7.80				10.01		12.21																					
		Kg	5,150		3,600				2,750		2,240																					
	4S	m	5.41		7.36		9.33		11.18		13.1																					
		Kg	5,320		3,800		2,930		2,370		2,010																					
	5S	m	5.51		7.46		9.43		11.28		13.3		15.18																			
		Kg	5,150		3,670		2,820		2,300		1,900		1,610																			
5-SL	m	5.52		7.72		9.93				12.13		14.33		16.49																		
	Kg		5,010	3,410		2,540				2100		1,600		1,330																		
HLRM 45	2S	m	4.89		6.86		8.83																									
		Kg	8,210		5,870		4,570																									
	3S	m		5.02	6.97		8.93		10.79																							
		Kg		7,740	5,490		4,220		3,470																							
	4S	m		5.14		7.09		9.05	10.91	12.83																						
		Kg		7,580		5,410		4,170	3,200	2,580																						
	5S	m		5.23		7.18		9.15		11.01		13.01	14.91																			
		Kg		7,290		5,170		3,790		2,860		2,250	1,880																			
	5SL	m		5.47		7.67		9.88			12.08		14.10		16.08																	
Kg			6,710		4,570		3,170			2,300		1,830		1,520																		



**Data in de table are
for harbour conditions**

Horizontal loads, lifting by hook
in harbour conditions.
For the minimum outreach, please
check the technical data sheet.

Features:

- Originally designed for a marine environment
- Continuous slewing
- Designed for easy maintenance
- High grade of customisation
- Cranes equipped with winch is possible, please contact our sales department



HLRM CRANES:
Fully foldable
telescopic cranes
with slewing
bearing system.

Crane model	nr of extensions		Length of boom (m) and crane lifting capacity (kg)								HEILA Cranes STANDARD Products Table								Revision – 1 Juni 2024										
			4m	5m	6m	7m	8m	9m	10m	11m	12m	13m	14m	15m	16m	17m	18m	19m	20m	21m									
HLRM-I 45	2S	m	4.63		6.13	7.93																							
		Kg	9,800		7,500	5,800																							
	3S	m	4.71		6.21		8.06	9.96																					
		Kg	9,500		7,200		5,550	4,200																					
	4S	m	4.73		6.23		8.08		10.02		12.04																		
		Kg	9,300		7,000		5,350		4,000		3,100																		
	5S	m	4.82		6.32		8.17		10.11		12.13		14.31																
		Kg	9,000		6,800		5,100		3,800		2,900		2,350																
	6S	m	4.91		6.41		8.26		10.2		12.22		14.39		16.66														
		Kg	8,700		6,550		4,900		3,650		2,780		2,190		1,800														
	7S	m		5.01	6.51		8.36		10.3		12.32		14.49		16.76			19.03											
		Kg		8,400	6,300		4,700		3,450		2,600		2,000		1,630			1,380											
	8S	m		5.12	6.62		8.47		10.41		12.43		14.6		16.87			19.14	21.04										
		Kg		8,150	6,150		4,600		3,250		2,415		1,865		1,500			1,235	1,080										
HLRM 65	2S	m	4.65		6.55	8.4																							
		Kg	13,720		9,920	7,820																							
	3S	m	4.77		6.67		8.67		10.67																				
		Kg	13,190		9,520		7,350		5,850																				
	4S	m	4.86		6.76		8.76		10.76		12.76																		
		Kg	13,230		9,490		7,260		5,450		4,360																		
	5S	m	4.95		6.85		8.85		10.85		12.85		14.85																
		Kg	13,410		9,620		7,070		5,220		4,140		3,440																
	6S	m		5.04	6.94		8.94		10.94		12.94		14.94		16.94														
		Kg		13,610	9,790		7,130		5,250		4,150		3,430		2,940														
	6SL	m		5.52		7.82			10.2		12.58		14.98			17.38		19.78											
		Kg		12,300		8,420			5,600		4,030		3,130			2,560		2,180											
HLRM-I 65	2S	m	4.51		6.01	7.76																							
		Kg	15,500		12,000	9,200																							
	3S	m	4.55		6.05	7.91		9.81																					
		Kg	15,000		11,500	8,800		6,400																					
	4S	m	4.65		6.14		8	9.9		11.9																			
		Kg	14,500		11,000		8,400	6,200		4,900																			
	5S	m	4.75		6.26		8.1		10		12		14																
		Kg	14,000		10,500		8,000		6,000		4,600		3,750																
	6S	m	4.87		6.37		8.21		10.12		12.12		14.12		16.27														
		Kg	13,300		10,100		7,700		5,600		4,300		3,500		2,900														
	7S	m	4.97		6.48		8.32		10.23		12.23		14.23		16.37		18.64												
		Kg	13,000		9,800		7,500		5,500		4,200		3,400		2,750		2,350												
	8S	m		5.13	6.6		8.43		10.33		12.32		14.33		16.48		18.75		20.64										
		Kg		12,000	9,200		7,000		5,000		3,800		3,000		2,500		2,200		1.900										
HLRM 90	3S	m	4.72		6.62		8.62		10.62																				
		Kg	17,910		12,990		9,720		7,330																				
	4S	m	4.82		6.72		8.72		10.72		12.72																		
		Kg	17,390		12,550		9,370		7,000		5,620																		
	5S	m	4.93		6.83		8.83		10.83		12.83		14.83																
		Kg	17,070		12,290		9,110		6,760		5,390		4,500																
	6S	m		5.02	6.92		8.92		10.92		12.92		14.92		16.92														
		Kg		16,530	11,930		8,430		6,240		4,950		4,110		3,520														
	6SL	m		5.32		7.42			9.62		11.82		13.82		15.82		17.82												
Kg			16,970		12,060			8,020		5,910		4,760		3,980		3,430													



HLRM CRANES: Foldable knuckle telescopic cranes with slewing bearing system.

Leadership in foldable telescopic cranes

Heila, with its HLRM series, is the market leader in foldable knuckle telescopic boom cranes. We design, develop and deliver our HLRM cranes as standard cranes or completely custom made. The entire range from small to big cranes is available and can be delivered quickly.

The HLRM crane is the perfect solution when high capacity is required and when deck space is limited. We develop solutions for customers in areas ranging from the fishing industry to the offshore sector and other areas of the maritime sector.

Heila was the first company to supply a 340 tm knuckle boom telescopic crane. It was also the first to supply a HLRM 460 tm dredging crane and the first to supply a HLRM 580 tm crane. The natural next step was to break the 1000 tm barrier for many offshore activities, thus greatly reducing mobilisation time of vessels. It is the offshore equivalent of a big Swiss army knife.

HLRM CRANES:
Foldable knuckle telescopic cranes
with slewing bearing system.

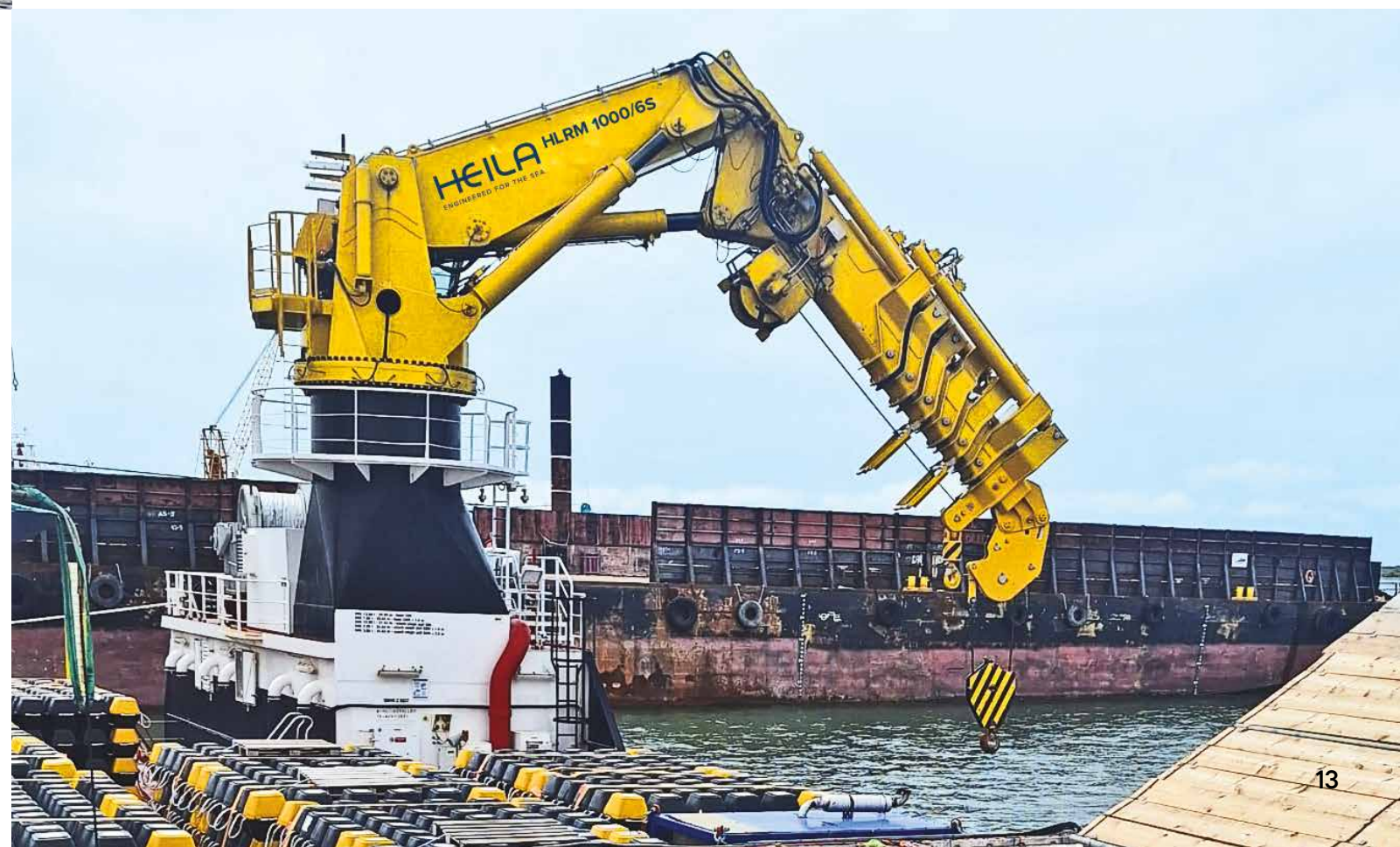


HLRM 1000-6SL

The company has supplied numerous sub-sea and active and passive heave compensation installations. Our HLRM 1000-6SL, a 70-ton foldable knuckle telescopic crane, will dramatically change the heavy-duty crane market. Even though it is equipped with a telescopic arm that can extend to a maximum radius of 30 metres, the crane only requires a limited space.

The HLRM 1000 features:

- Outreach up to 30 metres
- Lifting capacity up to 70 tons
- Compact crane in storage position
- Suitable for sub-sea application
- Designed and built for a harsh offshore and marine environment



Foldable knuckle telescopic cranes with slewing bearing rotation system.

HORIZONTAL LOAD HLRM CRANES

Crane model			nr of extensions	Length of boom (m) and crane lifting capacity (kg) HEILA Cranes STANDARD Products Table																		Revision – 1 Juni 2024							
				5m	6m	7m	8m	9m	10m	11m	12m	13m	14m	15m	16m	17m	18m	19m	20m	21m	22m	23m	24m						
HLRM 80	2S	m		6.13		8.13		10.13																					
		Kg		15,040		11,430		8,350																					
	3S	m		6.32		8.32		10.32		12.32																			
		Kg		14,450		11,020		7,910		6,180																			
	4S	m		6.55		8.55		10.55		12.55		14.55																	
		Kg		13,310		10,070		7,180		5,530		4,490																	
HLRM 120	2S	m		6.09		8.09		10.09																					
		Kg		19,170		14,400		11,540																					
	3S	m		6.11		8.11		10.11		12.11																			
		Kg		18,870		14,120		10,880		8,410																			
	4S	m		6.3		8.3		10.3		12.3		14.3																	
		Kg		18,040		13,500		10,720		8,260		6,730																	
	3SL	m			7.55			10.1		12.66			15.21																
		Kg			14,670			10,680		7,960			6,090																
	4SL	m			7.76			10.31		12.87			15.42			18.07													
		Kg			13,960			10,110		7,430			5,610			4,480													
HLRM 140	3S	m	5.68		7.85			10.02		12.18																			
		Kg	25,030		18,380			13,270		10,320																			
	4S	m	5.87			8.04		10.21		12.37		14.42																	
		Kg	23,130			17,030		12,220		9,480		7,850																	
	5S	m		6.19		8.26		10.33		12.4		14.52		16.74															
		Kg		21,170		15,680		12,360		10,170		8,360		7,020															
	6S	m		6.31		8.37		10.45		12.51		14.63		16.85			19.06												
		Kg		20,550		15,230		11,980		9,830		8,040		6,730			5,730												
	3SL	m			7.51			10.06		12.62		-	15.17																
		Kg			18,460			13,760		10,930		-	8,640																
	4SL	m			7.70			10.25		12.81			15.36			18.01													
		Kg			17,030			12,640		10,010			7,870			6,380													
	4SLK	m			7.69			10.24		12.8			15.35			18													
		Kg			17,140			12,730		10,090			8,170			6,640													
HLRM 170	2S	m	5.64		7.64		9.54																						
		Kg	27,950		18,200		13,440																						
	3S	m	5.88		7.95			10.02		12.08																			
		Kg	26,310		19,620			14,480		11,360																			
	4S	m		6.09		8.15		10.22		12.29		14.32																	
		Kg		25,200		18,830		14,980		12,130		10,030																	
	3SL	m			7.97			10.03		12.11		14.17																	
		Kg			19,220			15,270		12,250		9,780																	
4SL	m				8.16		10.22		12.3		14.36		16.39																
	Kg				18,450		14,630		11,620		9,230		7,700																
HLRM 200	2SL	m			7.58		9.75		11.92																				
		Kg			22,350		17,450		14,300																				
	3SL	m			7.6		9.77		11.94			14.1																	
		Kg			21,950		17,050		13,900			11,800																	
	4SL	m			7.82		9.99			12.16		14.32		16.37															
		Kg			20,750		16,050			13,050		11,000		9,600															
	18-4SL	m				8.49		10.84				13.20		15.55			18.05												
		Kg				22,430		17,170				13,700		10,570			8,540												
20-4SL	m					9.85			12.4		14.96			17.51															
	Kg					18,450			14,230		11,540			9,270			7,620												
HLRM 230	4SL	m			7.38		9.67		11.97			14.26		16.46															
		Kg			30,300		22,800		17,740			13,780		11,330															
	4SLK	m			7.44		9.73			12.03		14.32		16.52															
		Kg			28,360		21,350			17,020		14,140		12,180															



Data in the table are for harbour conditions

Horizontal loads, lifting by hook in harbour conditions.
For the minimum outreach, please check the technical.



HLRM CRANES:
Foldable knuckle
telescopic cranes
with slewing
bearing rotation
system

Crane model	nr of extensions	Length of boom (m) and crane lifting capacity (kg) HEILA Cranes STANDARD Products Table																				Revision - 1 Juni 2024								
		5m	6m	8m	9m	10m	11m	12m	13m	14m	15m	16m	17m	18m	19m	20m	21m	22m	23m	24m	25m	26m	27m	29m						
HLRM 280	2SL	m			9.08			12.08			15.08					20m	21m	22m	23m	24m	25m	26m	27m							
		Kg			31,100			22,700		16,500																				
	3SL	m			9.48			12.48			15.48		18.48																	
		Kg			28,800			20,950		14,890		11,340																		
	4SL	m			9.88			12.88			15.88		18.88			21.88														
Kg				26,680			19,290		13,370		10,000	7,970																		
HLRM 340	1S	m			9.61			12.17																						
		Kg			20,000			20,000																						
	2S	m		8.69			11.25		14.09																					
		Kg		26,000			20,000		15,000																					
	3SL	m			9.57			12.47		15.47		18.47																		
Kg				32,500			24,000		18,000		13,900																			
HLRM 440	2S	m		8.69			11.25		14.09																					
		Kg		37,000			27,100		20,500																					
	3S	m			9.07		11.63		14.47		17.31																			
		Kg			35,000		26,000		18,500		14,400																			
	4S	m	5.71		9.54			12.09	14.84		17.69			20.60																
		Kg	55,000		44,900			28,500	20,000		15,200		12,300																	
	5S	m			9.54			12.09	14.84		17.69			20.60					23.35											
Kg				43,600			27,700		19,200		14,600		11,800		10,432															
HLRM 460	2S	m				10.62			13.67		16.72																			
		Kg				36,000			26,500		20,000																			
	3S	m				10.98			14.03		17.08		20.13																	
		Kg				32,000			23,000		18,000		15,000																	
	4S	m				10.98			14.03		17.08		20.13					23.15												
Kg				31,100			22,300		17,500		14,600		13,000																	
HLRM 580	1S	m																												
		Kg																												
	2S	m	6.32			10.59			13.63		16.70																			
		Kg	65,000			45,500			33,800		26,800																			
	3S	m				10.98			14.03		17.08		20.13																	
		Kg				40,900			30,100		23,600		19,500																	
	4S	m						12.80		15.85		18.90		21.95				25.00												
Kg							25,000		20,500		16,000		12,500		10,000															
5S	m				11.78			14.83		17.88		20.93				23.98							27.03							
Kg					35,200			26,200		20,500		16,200				13,700						11,700								
HLRM 1000	2S	m						12.03		14.63		17.23																		
		Kg						70,000		56,000		47,000																		
	3S	m						12.51		15.11		17.71		20.31																
		Kg						62,500		49,500		41,500		35,500																
	4S	m						12.96		15.56		18.16		21.76			23.46													
		Kg						57,000		44,500		37,500		31,500		26,500														
	5S	m							13.44		16.04		18.64		21.24		23.94					26.64								
Kg								52,500		41,500		34,000		28,500		23,100		19,800												
6S	m									16.55		19.15		21.75			24.45					27.15	29.85							
Kg										33,200		26,400		21,700			17,800					15,300	13,500							
HLRM 1500	2S	m					11.00		13.20		15.60																			
		Kg					83,000		69,550		58,128																			
	6S	m									15.20		17.23		19.60		22.03			25.23		27.00								
Kg										41,200		32,800		26,970		22,030			19,000		16,800									

HEILA'S CRANES BEST SELLING

The HR650 and HLRM440: our pride and joy!



HR650/25-2BJ

This crane is a favorite with our customers!

The knuckle boom makes it possible to increase the reach and lifting height, making this crane highly versatile.

The ability to keep the tip of the boom close to the load in all positions reduces load sway.

With the **HR650** performing a wide scale of lifting activities is a piece of cake.

With the **HR650/25-2BJ** customers can easily lift 25 ton at 10m and 10 ton at 20 m.

And in the process, the crane can be upgraded with options like AHC, AOPS and MOPS.

HLRM 440

Next up is our other popular crane, the **HLRM440** serie. These cranes pack a punch while remaining compact and surprisingly lightweight for its size. The lifting capacities of the different types can be found on page 15.

Our **HLRM440** cranes have been widely deployed throughout the Netherlands and the United States. With a maximum lift capacity of 55 tonnes and a reach of up to 23 m, this robust crane is our best-selling solution for customers seeking exceptional strength and a compact footprint.

The crane can be outfitted with personnel lifting capabilities, a winch, AOPS, and MOPS for increased versatility. Depending on the customer's needs, we can also supply the crane with a fully equipped operator cabin, radio control system, and HPU.

Services

Worldwide service

Cranes must be able to operate efficiently under the most diverse sea conditions. Wherever our customers may be, we ensure that their cranes remain operational.

Heila Cranes and its servicepartners are responsible for Heila's field services worldwide. We provide customers with technical support, on-site repairs, installation, commissioning and the complete refurbishment of their cranes. Furthermore, critical spare parts, such as cylinders, seal kits and electrical components for standard cranes are held in stock in Italy. When you buy a new Heila crane, we are available to provide you with information about our standard spare parts packages.

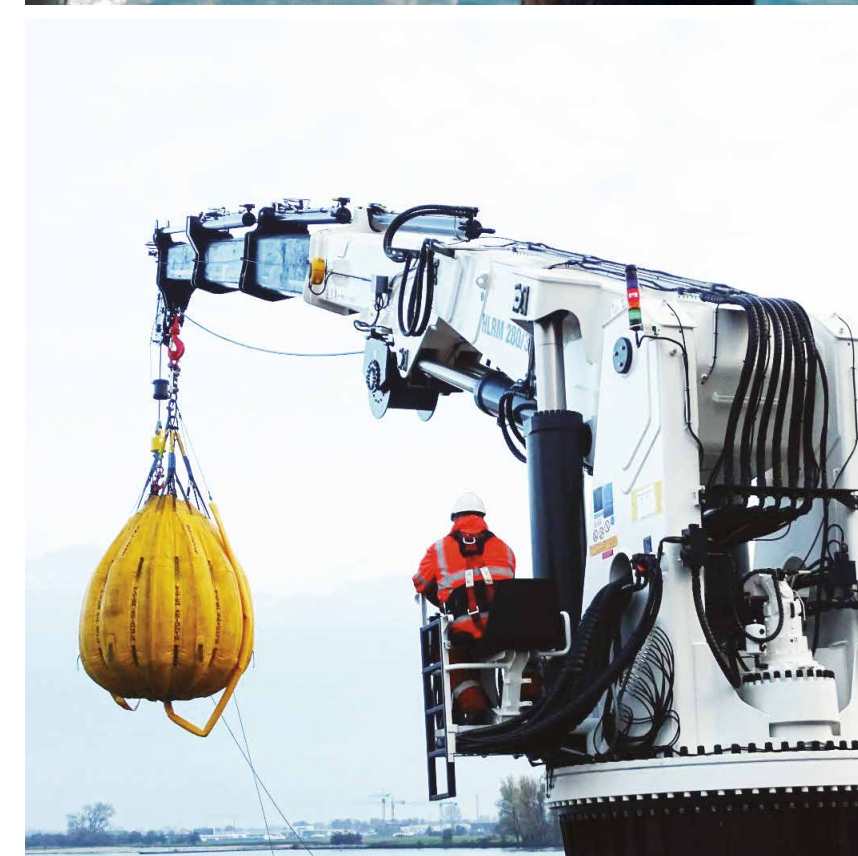
Heila Spareparts department supports the customers with a ticketservice providing support and feedback within 48 hours.

Refurbishment

The HEILA refurbishment program offers several types of refurbishment, ranging from component repairs, and the refurbishment of slewing gearboxes, control valve blocks, cylinders and winches to full crane refurbishments.

Benefits of refurbishment:

- Reduced downtime
- New warranty period
- Extended product life
- New anti-corrosion treatment



OPTIONS AND ACCESSORIES FOR A BROAD LEVEL OF CUSTOMISATION



Optional features for Heila cranes

DESIGN FEATURES

CERTIFICATION & CLASSIFICATION

Our marine cranes comply with ISO 19354 "Marine Cranes – General requirements". If required, we can also meet the principal international standards for shipboard and offshore applications including EN13852-1 and API-2C. All cranes can be certified in accordance with the rules of international classification societies including:

- American Bureau of Shipping (ABS)
- Bureau Veritas (BV)
- China Classification Society (CCS)
- Det Norske Veritas – Germanischer Lloyd (DNV-GL)
- Lloyd's Register of Shipping (LRS)
- Registro Italiano Navale (RINA)
- Norwegian Maritime Authority (NMA)
- Russian Maritime Register of Shipping (RMRS)
- Others on special request

We use 3D CAD systems, verified ANSYS software and FEA techniques (Finite Element Analysis) to check and assure the structural integrity of our equipment.

AUTOMATIC AND MANUAL OVERLOAD PROTECTION SYSTEM (AOPS/MOPS)

The AOPS system features safety equipment that automatically safeguards and protects the crane against overload and 'overturning-moment' when operating by allowing the hook to be pulled away from the crane in a controlled manner so avoiding significant damage.

When the MOPS system is activated, if there is the risk of overload, the crane operator is warned to manually operate the winch release. AOPS/MOPS is mandatory for certified offshore cranes that perform ship-to-ship or ship-to-platform lifting operations. Heila offers a turnkey system.

OPTIONS AND ACCESSORIES FOR A BROAD LEVEL OF CUSTOMISATION

LOW TEMPERATURE AND ARCTIC SOLUTIONS

An extensive range of options and accessories are available to operate in low temperature conditions. Special steel for use in low temperatures and specific technical solutions for winterisation assure the safe operation of the cranes in the most severe low temperatures and Arctic environmental conditions.

ATEX / NEC505 HAZARDOUS AREA EXECUTION

Heila offers solutions for use of its cranes in hazardous areas (explosion proof execution). All such cranes are supplied with a dedicated EX-ATEX Declaration of Conformity.

LIFTING DEVICES AND LOAD CONTROL

HOISTING WINCHES

Heila provides a wide range of winches. From a single line pulling capacity of 500 Kg up to more than 50 metric tons, multiple speeds, multiple drum rope capacities and in accordance with customer requirements. They are equipped with an electric/hydraulic load limiting device that controls the pulling force on the rope and that will not allow the maximum safe working load of the crane to be exceeded. All Heila winches are fitted with non-rotating galvanised and greased steel cables to ensure the best performance in all working conditions.

PERSONNEL LIFTING COMPLIANT WITH EN 13852-1 OR API-2C

Heila offers its customers a complete range of solutions for personnel lifting that comply with EN 13852-1 or API-2C. Heila can equip its cranes with 'dedicated winches' for personnel lifting or 'dual use winches' that can be used for both cargo handling and personnel lifting.

CONSTANT TENSION (CT) WINCHES

A Heila constant tension winch system combines a special winch, a customised electronic control system and a dedicated PLC. Constant tension winches are used for marine and offshore lifting operations at sea.



The system creates a constant line-pull between the load and the winch. Prior to starting the operation the line-pull is set. It is measured by a load sensor and monitored by the PLC central control system. If the actual value differs from the pre-set value, the winch will pay in or pay out wire rope to maintain the pre-set value. Constant tension winch systems are suitable for pre-tensioning the wire rope used in buoy-laying operations, but also when positioning and connecting floating pipelines during dredging projects. Moreover, they are perfect for raising and lowering tender boats or deck equipment from a vessel into sea.

ACTIVE HEAVE COMPENSATION (AHC)

Current offshore and subsea projects require advanced technology to position loads on the seabed for subsea installations or to position them in the air, for instance when servicing wind turbines. An AHC system on the crane compensates for the vessel's motion. Heila supplies tailor-made AHC systems on winches that rely on the input of motion sensors. Responding to the signal from these sensors, the winch pays in or pays out wire rope to keep the load at a constant elevation. An AHC system on a winch responds rapidly and, when combined with active hydraulic accumulators, reduces power consumption significantly.



OPTIONS AND ACCESSORIES FOR A BROAD LEVEL OF CUSTOMISATION

INTEGRATED PULLEY HEAD AND/OR PULLEY BLOCK

When a winch is used rather than a fixed hook, different solutions are required to lift the loads. Heila offers the optimal solution to its customers by integrating either a pulley head or top sheave into the last boom extension. To be able to work with both a winch and a fixed hook, Heila provides a pulley block that can be connected, when required, to the last boom extension hook connection point. As an additional option, Heila can install single line pull or multiple line pull solutions according to the customer's needs.

CONTROL SYSTEM

- Standing platform
- Local control operator panel
- Remote control
- Operator cabin
- Radio remote control

SAFETY AND OPERATION

SEA STATE SELECTOR

Heila marine cranes can be designed to operate in different sea states. To be able to select the type of operation for the different states, the crane is fitted with a sea state selector switch on its control panel (either at a fixed location or as wireless control unit). The sea state selector switch allows the crane to be operated safely and precisely in difficult marine conditions.

ACOUSTIC AND VISUAL ALARMS

Acoustic and visual alarms can be installed on cranes to allow the crane to be operated reliably and safely. A green / yellow / red light is installed on the crane column. This shows, respectively, the 90% / 100% / 110% SWL load being experienced by the crane. In addition to the visual alarm, an acoustic alarm can be installed. Acoustic and visual alarms are mandatory for use on fully IACS certified cranes.

OPTIONS AND ACCESSORIES FOR A BROAD LEVEL OF CUSTOMISATION

LOAD AND RADIUS INDICATORS

Depending on the type of application and/or in agreement with the customer, Heila can provide specific load and radius indicators that can be displayed on one or more portable remote units or on video screens installed in operator control stations and/or in operator cabins. We can also provide the crane with a visual indication of the loads and 3D controls.

LED FLOODLIGHT

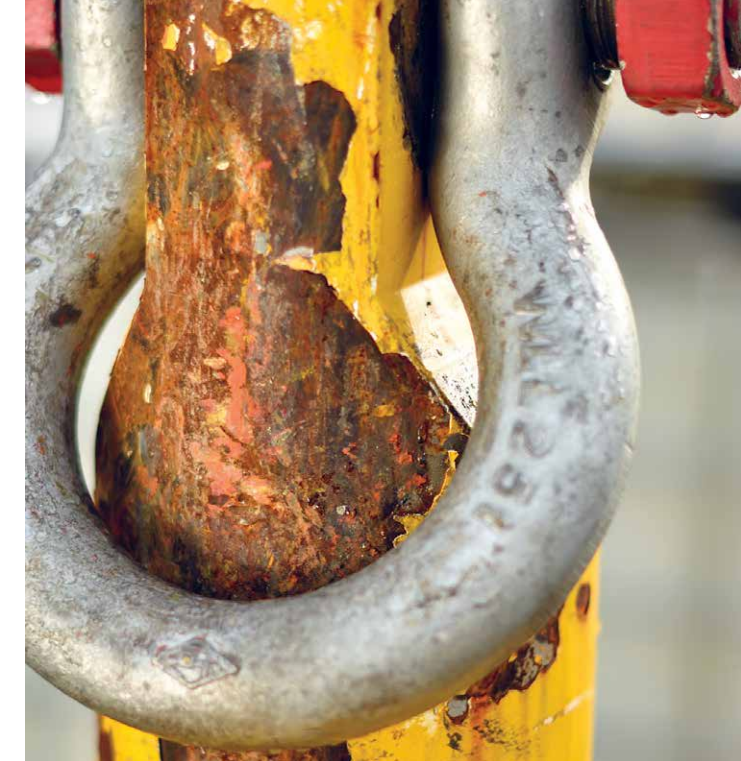
LED floodlights can be fitted to the tip of the crane's boom to illuminate the working area around the crane. Heila offers swivelling or fixed solutions with different power outputs ranging from 100 to 1000 equivalent Watt (W).

LOAD SENSING (LS) SYSTEM

In situations where a more complex hydraulic circuit is used, Heila can fit a main hydraulic control valve block that can be used with load sensing (LS) pumps. This solution increases the efficiency of the hydraulic circuit and reduces both the power loss of the system and the heating of the oil. For the best solution, this feature must be discussed with the customer.

CENTRALISED GREASING SYSTEM

Heila marine cranes have greasing points on all pins and pivot points to keep them operating efficiently and to prevent excessive wear. A 'Manual Central Greasing System' can be installed as an optional feature on all Heila cranes to simplify maintenance and extend the crane's life. On request, an 'Automatic Central Greasing System' can be installed to programably and automatically grease the crane without any human intervention.



SURFACE TREATMENT AND ANTI-CORROSION SOLUTIONS

FLAME METALLISATION TREATMENT

Flame metallisation is a thermal spray coating process that is used to coat anti-corrosive metals onto surfaces, it is long lasting and highly effective. On request, Heila can thermally spray zinc and aluminium onto all of the crane's structural steel parts providing the highest grade of corrosion protection.

PAINTING AND CUSTOM CRANE COLOUR

The standard Heila paint system complies with ISO 12944-5 C5 Very High and ISO 12944-9 CX Offshore (successor of the C5M paint system); the standard colour is RAL 1005 "Honey Yellow" combined with RAL 7021 "Black Grey". However, Heila also offers alternative, NORSOK M-501 compliant paint systems, special isocyanatefree paint systems or customer-specific paint systems. All topcoats are available in customer-specified RAL colours.

HYDRAULIC CYLINDER ROD COATING HD4+ AND HD4stars

Heila has improved the corrosion resistance and wear-resistance of its hydraulic cylinder rods with two unique treatments registered under the names HD4+. These innovative hi-tech solutions efficiently protect the cylinder rods from corrosion and help to protect against leaks, coating peeling and seal wear.

Cranes applications in the Marine and Offshore Industry.

Tugs & Workboats & Dredging vessels



Fishing & Aquaculture



Yacht Support Vessels



Cranes applications in the Marine and Offshore Industry.

Oceanographic Research Vessels



Offshore Oil & Gas and Wind



Navy & Coast Guard



COMPLETE RANGE OF HEILA CRANES

HORIZONTAL LOAD HLRM CRANES AND SPECIAL EXECUTION

Crane model	nr of extensions		Length of boom (m) and crane lifting capacity (kg)							Revision – 1 Juni 2024
			3m	4m	5m	6m	7m	8m	9m	
HLRMS 50 YACHT	3S	m	3,60		5,55		7,52		9,85	
		Kg	1500		1500		1500		1500	
HTR 50/9.3	1S	m		4,84					9,30	
		Kg		10000					5000	
HTR 50/11	2S	m	3,80				7,3			10,8
		Kg	11500				6000			4000

The HLM and HLRM, HRM and HRMS and HR series cranes described in this catalogue are the core products of Heila. However, Heila has a highly skilled team of engineers that are able to design complex, state-of-the-art cranes to be customised with our wide range of options and accessories.

ENGINEERING CAPABILITY

Heila has significant experience in designing and building all of the cranes mentioned below. Heila also has highly specialised knowledge and experience in designing and building cranes suitable for Arctic conditions and ATEX environments, as well as specialised dredging cranes (DRG) that are able to operate at extreme heel and trim angles. Heila has in-house the capability to build the crane safety & control systems, and is able to develop PLC software. It is therefore able to support and maintain the crane's safety & control system throughout the crane's life.



BULK MATERIAL AND LIVE STOCKS MANIPULATOR
Working radius up to 44m.



EGM 800 GAS MANIPULATOR
This special Exhaust Gas Manipulator moves gasses from A to B. Working radius up to 50m.



HTR50
Especially for yachts.



Telescopic knuckle boom cranes
HLRM
80 tm – > 1,500 tm

- Characteristics:**
- Marine offshore crane
 - Continuous slewing
 - Crane boom is both knuckled and extendable, enlarging the working area
 - High manoeuvrability
 - Compact storage configuration
 - Possibility to use a fixed hook
 - Maximum capacity at short outreach



Knuckle cranes
HR-2BJ
1500 tm – > to be customised

- Characteristics:**
- Marine offshore crane
 - Knuckle boom
 - Maximum capacity at a wide range of outreaches, large working area
 - Easy to adapt for ATEX environments
 - Low maintenance



Fully foldable telescopic cranes
HLM, HLRM
3 tm – 90 tm

- Characteristics:**
- Marine offshore crane
 - Crane boom is knuckled, foldable and extendable, which enlarges the maximum working area
 - High manoeuvrability
 - Compact storage configuration
 - Possibility to use a fixed hook
 - Maximum capacity at short outreach

SPECIAL PRODUCTS
as bulck and live stock manipulator,
exhaust gas manipulator
and cranes for yacht.

REPRESENTATIVE



Disclaimer: No rights can be derived from the dates and information in this brochure. Information and dates are subject to change without notice.

HEILA

ENGINEERED FOR THE SEA

Heila Cranes S.p.A.

Via Romana, 34/6 | 42028 Poviglio (RE).
Italy
Phone +39 0522 966352
Mail info@heila.com
VAT ITO2475650350

Heila Cranes Nederland B.V.

Stationspark 730 unit 6 | 3364 DA Sliedrecht
The Netherlands
Phone +31 (0)416 651012
Mail info@heila.com
VAT NL810757515B01

heila.com